

# R-F-M

## THE MIDLANDS MART

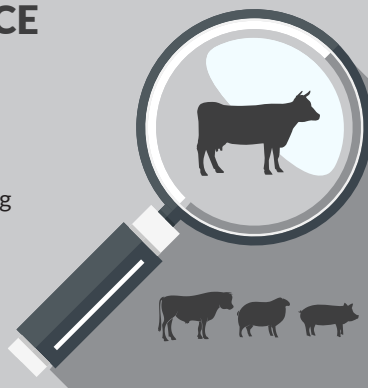
— RUGBYFARMERSMART.COM —

The Charolais Pavilion, Avenue M, Stoneleigh Park,  
Kenilworth, Warwickshire CV8 2RG  
02476 697731 | [www.rugbyfarmersmart.com](http://www.rugbyfarmersmart.com) | 43/139/8013  
Office hours: Monday to Friday - 9.00am - 5.00pm  
Opening Time: Gates open at 5.30am until further notice

## MARKET REPORT FOR MONDAY 14<sup>th</sup> AUGUST 2023

### MARKET AT A GLANCE

Prime Steers to 311p/kg & £2031  
Prime Heifers to 321p/kg & £1997  
Prime Bulls to 291p/kg & £2357  
Cows to 176p/kg & £1281  
Prime Lamb SQQ 272p/kg (1544 Avg  
£118)  
Prime Lambs to 330p/kg & £164  
Ewes to £211 (1053 Avg £108)



### FRIDAY 25<sup>th</sup> AUGUST

BREEDING SHEEP FAIR TO INCLUDE THE NSA RAM SALE

Catalogues & Entry Forms available by post, email or on the website  
[www.rugbyfarmersmart.com](http://www.rugbyfarmersmart.com) | [admin@rugbyfarmersmart.com](mailto:admin@rugbyfarmersmart.com)

## CATTLE: 80 FORWARD



Monday 14th August 2023

80 Prime Cattle

39 Prime Heifers sold to £1996

24 Prime steers sold to £2030

11 Prime Bulls sold to £2357

6 Cull Cows sold to £1281

As with the national trend a shortage of numbers forward, with demand slightly increased and a slight firm in trade. More numbers are required weekly to satisfy demand.

In the clean a varied show again, however all classes keenly bid for.

Baxter's topped the day with a fantastic heifers at 321ppk

In the Bulls what a run of quality. Pure Bred Bulls from Honesberie Farms - Nigel Hollick topped at 291

Cull cows again short in numbers but sold to an improved trade

**Auctioneer: Emma Coupland (07808 271218)**

**PLEASE COULD ALL VENDORS BOOK IN STOCK,  
EITHER BY A QUICK CALL, TEXT OR EMAIL THANK YOU!**

Office: 02476697731 | Email: [admin@rugbyfarmersmart.com](mailto:admin@rugbyfarmersmart.com) | Tom: 07774723758

### *Photograph Request*

***Rugby Primestock Society are after any old pictures from past Rugby Primestock Shows for this year's 50th anniversary.***

***please could copies be emailed to Sophie [admin@rugbyfarmersmart.com](mailto:admin@rugbyfarmersmart.com) or sent to the market office. We can scan the photos and return the originals.***

## STEERS & BULLS

Top prices per Head				FA
Limousin (Bull)	810kg	£2357	Honesberie Farms	Y
Limousin (Bull)	788kg	£2182	Honesberie Farms	Y
Limousin (Bull)	736kg	£2134	Honesberie Farms	Y
Limousin (Bull)	752kg	£2113	Honesberie Farms	Y
Charolais x	784kg	£2030	PC & RA Nichols & Son	Y

Top prices per Kilo				
Limousin x	644kg	311ppk	GR Fountaine & Son	Y
Limousin (Bull)	810kg	291ppk	Honesberie Farms	Y
Limousin (Bull)	736kg	290ppk	Honesberie Farms	Y
Angus	668kg	289ppk	GR Fountaine & Son	Y
Limousin (Bull)	684kg	284ppk	GR Fountaine & Son	Y

## HEIFERS

Top prices per head				FA
British Blue	622kg	£1996	F K Baxter	Y
Limousin	642kg	£1958	DTP & PA Walters	Y
Limousin	650kg	£1956	Honesberie Farms	Y
Simmental	770kg	£1940	Tillbrook Farm	Y
Limousin	610kg	£1921	F K Baxter	Y
Top prices per kilo				
British Blue	622kg	321ppk	F K Baxter	Y
Limousin	610kg	315ppk	F K Baxter	Y
Limousin	582kg	307ppk	F K Baxter	Y
Limousin	642kg	305ppk	DTP & PA Walters	Y
Limousin	594kg	303.ppk	DTP & PA Walters	Y

## Len Eadon 1999-2022 Tribute page

<https://leneadon.muchloved.com/?fbclid=IwAR1QM9qsvxqscmyehDUuwJvjrbR4KICliDqyezwbDYBEAsDaB164bZn50g4>

## COWS

Top prices per head Cows					FA
Angus	728kg	£1281	Leam Farm Partnership		Y
British Shorthorn	706kg	£1221	Leam Farm Partnership		Y
Hereford	682kg	£1200	D J Hull & Partners		Y
Top prices per kilo					
Angus	728kg	176ppk	Leam Farm Partnership		Y
Hereford	682kg	176ppk	D J Hull & Partners		Y
British Shorthorn	706kg	173ppk	Leam Farm Partnership		Y

## SPRING LAMBS: 1560 FORWARD SQQ 272P/KG AVG £118



Lambs; A trade that looked to take off last Thursday as trade was driven up by a shortage of Supply. Sadly as Supply has lifted a continued slump in Export demand has again dampened the trading. That said and SQQ of 272p/kg ahead of expectations for the time of the Season. Numbers reasonably short as Vendors struggle for meat, focus on land work or more than likely did not want to venture into the Monday Morning rain deluge. Export weights the most depressed trading spec with Meat and cutting Lambs well contested. Top of the trading M J Woodward to 321p/kg at 38kg Beltex with Philly Batchelor 42kg at 311p/kg and DS & LE Wadland 42kg to 310p/kg and R Richins, Oxford 309p/kg. Export Lambs trading 265p/kg as a general with those lacking any finish 258 to 263p/kg. Weight lambs the best contested throughout and topping today at 49kg for 313p/kg for R Richins whom also sold 52kg to 300p/kg. K Attfield 56kg to 293p/kg. The figure that counts the all in avg which stands just short of £119 including a good number of Rare Breed lightweights. In the lump Export Lambs to £136 for RFS whilst Philly Batchelor 42kg to £130.50 and D Wadland 42kg to £130. Plenty of Export Lambs today trading £118 to £125. Overall a top of £164 for K Attfield at 56kg with JM Grace 58kg to £159 Messrs Attfield £157 and R Richins £150. Trade remaining without real bite but the need for finish ever more apparent.

**Auctioneer: Thomas Wrench**

Sunday lairage is now open from 9am-3:00pm  
Gates close 3:00pm **STRICTLY.**

## PRIME LAMBS SQQ 272 p/kg

### Per Kilo **under 45.5kg**

Goats	34.00kg	330ppk	DS & LE Wadland
Goats	36.00kg	322ppk	DS & LE Wadland
Beltex	38.00kg	321ppk	M J Woodward
Beltex	42.00kg	311ppk	R J Batchelor
Char	42.00kg	310ppk	DS & LE Wadland

### Per HEAD

Char	45.00kg	£136.00	R Staverley
Beltex	42.00kg	£130.50	R J Batchelor
Char	42.00kg	£130.00	DS & LE Wadland
Char	45.00kg	£130.00	DS & LE Wadland
Beltex	43.00kg	£130.00	M J Woodward

### Per Kilo **over 45.5kg**

Beltex	48.00kg	313ppk	R Richins
Beltex	52.00kg	300ppk	R Richins
Char	56.00kg	293ppk	K Attfield
Char	48.00kg	285ppk	DS & LE Wadland
Texel	46.00kg	283ppk	DJ & ST Webb

### Per HEAD

Char	56.00kg	£164.00	K Attfield
Beltex	58.00kg	£159.00	J M Grace
Char	59.00kg	£157.00	K Attfield
Char	56.00kg	£157.00	K Attfield
Beltex	52.00kg	£156.00	R Richins

**\*\*FAT CATTLE TIMINGS\*\***  
**COWS 8:30AM**  
**PRIME CATTLE 9AM**

## CULL EWES: 1053 FORWARD



Ewes; Buyes galore and a fast trade throughout. Based on the number booked in we expected towards 1500 but clearly just a higher percentage booked this week over usual weeks. As a result plenty of buyers and a flying trade throughout with extra grazing Accounts. Top today £211 for V J Roots with Texel x and D Edwards Texels to £202. V J Roots then £200 and £195. Tex x £175 for MM Clarke & Son and in general weighted Ewes £150 upwards. Fat and Heavy Ewes the order of the day seeing Suffolks to £179 for Hyde Lane Farms and £170 for J & R Lowe. Philly Batchelor £156 and in general £135 plus for weighted Suffolks. Plenty of Ewes £130 plus today as weight kicks in as a required commodity. Mules on fire again selling to a top of £166 for G & E Livestock, Norwich and large pens from Hyde Lane Farms £135.50 with Welsh to £134. Mules generally £112 upwards if meat.

*Auctioneer: Thomas Wrench*

### EWES

Texel	£211	V J Roots	Char	£195	V J Roots
Texel	£202	D Edwards	Suffolk	£179	Hyde Lane Farms
Char	£200	V J Roots	Char	£178	J & R Lowe

## STORE LAMBS: 71 FORWARD



A small entry today of Store Lambs, but a nice run from D Harris saw them topping at £113, closely followed by others from the same stable to £109. Several over the £80-£90 mark

*Auctioneer :Emma Coupland*

## STORE CATTLE :



A Good Catalogue for the time of year but all that could go wrong on the Morning did. The only Hot day for a month and the Cornish Wagon breaking down to name a few. That aside a predicted small audience as many forged on with trying to do some Summer work. Those in attendance though meant business and all but the very young and oddities a trade to hold the current high trend. J Powell, Worcester kicked us off selling 6m Rigs to £700 before J Cox new to this ring sold Blues done well on the Buck-et seeing Steers 7m to £655 and Heifers £500. Wolverton Farms though setting the trend for quality Cattle with a 10m old Simmental Heifer to £935. The Gloucestershire Supporters then saw Rex Hart, Chipping Campden sell 12month old Maine an'jou Steer to £1290 and Limousin £1200. NG & RA Hart 15 month Blonde Steers to £1190 and £1180 with others £1135 and £1100 and sisters to £1105. Another new Customer saw CG Bonner & Son up from Milton Keynes with a consignment of mid age Stores to see the 27 mainly heifers avg £1070. Topping with Steers at £1215 Simmentals 16 months of age and others £1180, £1170. Heifers topped at £1135 and £1130. Messrs Jackson down from Market Bosworth saw Blue Buckets 24m age Steers to £1310 and £1200 with Heifers 22m to £1085. B Griffin, Leicester sold Black and Whites to £800 before NG & RA Hart rounded the day off with 24m Lim Heifers at £1180 and Blue Steer 36m to £1210. The dip in Fat Cattle trade seeming to now to be correcting itself as Supply side limits seem to thankfully be revealing themselves.

*Auctioneer :Thomas Wrench*



**STORE CATTLE SALES**

**RFM**  
THE MIDLANDS MART

**SEPTEMBER 14TH**  
**OCTOBER 12TH & 19TH**  
**NOVEMBER 2ND, 9TH & 23RD**  
**DECEMBER 14TH**

**• + STORE LAMBS**

**CONTACT 02476697731 OR EMAIL [ADMIN@RUGBYFARMERSMART.COM](mailto:ADMIN@RUGBYFARMERSMART.COM)  
TO BOOK IN YOUR ENTRIES**



# Farm insurance, the way it should be

We're a family-run business and pride ourselves on forging long term relationships with our farming and agricultural clients. Covering the Midlands, South West and South East, we deliver an extensive range of farm, agri business and equine policies tailored to you.

Farm & Equine **01865 290915**

General **01865 844998**

 Follow us **@County\_Farm**

[www.county-insurance.co.uk/farms](http://www.county-insurance.co.uk/farms)



Independent Insurance Brokers County Insurance Services Limited. Address and Registered Office: County House, Glyme Court, Langford Lane, Kidlington, Oxon OX5 1LQ. Authorised and regulated by the Financial Conduct Authority (FCA) (FRN: 597267). Company registered in England No. 08411634



# Harvest Hoolie

## Barn Dance

LIVE BAND!



# Sat 7th Oct 2023

## £15 A TICKET

Includes a ploughman's platter supper

BAR FROM 7PM

DANCING FROM 7:30PM

Lodge Farm, Chesterton, CV33 9LG

Contact [HARVESTHOLIE@GMAIL.COM](mailto:HARVESTHOLIE@GMAIL.COM)

for other queries please ring 07903193615

In aid of the Air Ambulance, Motor Neurone Disease Association,  
and St Giles' Church





## AUTO GATES LTD

Bridge Farm, Holt Lane, Ashby Magna, LE17 5NJ

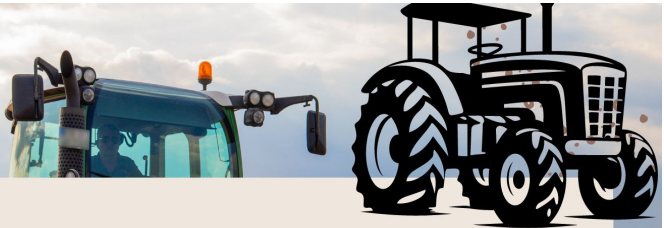
Trevor 07498993897/01455 202791

Email: [tjautogate@gmail.com](mailto:tjautogate@gmail.com)

Fitted to new or existing gates, wood or steel automated.

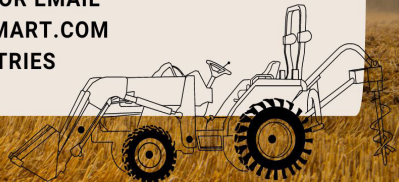
Sliding, swinging or cantilever.

**R-F-M**  
THE MIDLANDS MART



# MACHINERY AUTUMN SALE FRIDAY 27TH OCTOBER

CONTACT 02476697731 OR EMAIL  
[ADMIN@RUGBYFARMERSMART.COM](mailto:ADMIN@RUGBYFARMERSMART.COM)  
TO BOOK IN YOUR ENTRIES



MIDLANDS MART

**AUGUST BREEDING SHEEP FAIR INCL.  
NCM THEAVES & NSA RAM SALE  
FRIDAY 25TH AUGUST**

CONTACT 02476697731 OR EMAIL  
ADMIN@RUGBYFARMERSMART.COM

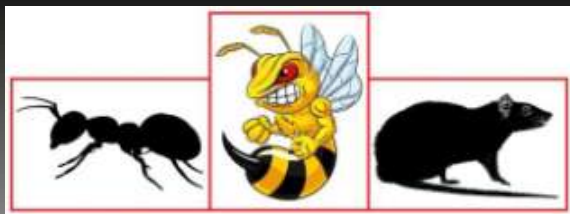
**RFM**  
THE MIDLANDS MART

*CALF*  
*SALES 2023*

AUGUST 21ST  
SEPTEMBER 4TH & 18TH  
OCTOBER 2ND, 16TH & 30TH  
NOVEMBER 6TH & 20TH  
DECEMBER 4TH & 18TH



CONTACT 02476697731 OR EMAIL ADMIN@RUGBYFARMERSMART.COM  
TO BOOK IN YOUR ENTRIES



# RDB Pest Control

Reliable | Trustworthy | Fast | Effective  
Competitive Prices

**Ryan Brunt**

**07922 091 459**

**[www.rdbpestcontrol.co.uk](http://www.rdbpestcontrol.co.uk)**

## **Why You Should Choose Us**

- ✓ Cater for Red Tractor and Farm Assurance Schemes
- ✓ Wide ranging experience on Farms with over 25 existing routine agricultural clients
- ✓ Fully qualified - RSPH Level 2 in Pest Control
- ✓ Trustworthy and security vetted
- ✓ Prompt, reliable fast response

## **A selection of sites where I have experience:**

Farmers Market • Local Airport • Farms • Warehouses •  
Industrial Estates • Food Premises • Private Houses • Country  
Estates • Building Sites • Local Councils • Schools •  
Day Nurseries • Care Homes

# ARE YOU FIT FOR FARMING?

Come and join us in the livestock market café on

**Monday 4 September 2023**  
**Monday 20 November 2023**

to meet representatives from:

**Parish Nursing**  
**Vital Massage Marton**  
**The UK Sepsis Trust**  
**FCN/RABI**  
**Warwickshire Rural Hub**

Since January 2022 our nurses have offered health advice to 300 farmers and referred 42 farmers to their GP.

We have also delivered over 100 free massages!



Organised by Warwickshire Rural Hub and grant aided by:

[www.ruralhub.org.uk](http://www.ruralhub.org.uk)

Receive a blood pressure reading and holistic health advice from a senior nurse

Choose to speak to a nurse privately in a separate room

Pick up free health leaflets and a copy of the FCN booklets "Fit for Farming"

Hear about the welfare support available from the farming help charities

Enjoy a free back massage to help relieve tension and aching muscles





# WE COVER SMALL FARMS, LARGE FARMS AND EVERYTHING IN BETWEEN



From sheep farmers to arable farmers.  
Flower growers to poultry farmers.

NFU Mutual is proud to insure over 75% of UK farms with our Farm Select insurance. But we want more farms to benefit from great cover and local service. NFU Mutual has introduced Farm Essentials insurance – designed to meet the needs of smaller farms.

As your local agency, we are close by and can provide expert advice and hands-on support when you need it.

Call **Coventry Office** on **02476 444519**

NFU Mutual, 6 Eastwood Business Village,  
Harry Weston Road, Binley Business Park,  
Coventry, CV3 2UB



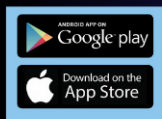
**NFU Mutual**  
FARM INSURANCE



**In Partnership with Herdwatch**

**The UK's no1 livestock management software**

- ✓ All your farm records in one place
- ✓ Spend less time on farm paperwork
- ✓ Advertise your cattle for sale on Herdwatch



**Display your AD to over 20,000  
farmers before bringing them to  
RFM – The Midlands Mart**

**FINISHING CATTLE? GROWING CATTLE? FEEDING SHEEP?**

**BERRYSTOCK  
FEEDS**



**Do you want HIGH PERFORMANCE, COST EFFECTIVE, FULLY  
ASSURED and COMPLETE FEEDS? Then contact BERRYSTOCK FEEDS:**

Tel: 01788 890320 E-Mail: [john@berryfieldsfarm.co.uk](mailto:john@berryfieldsfarm.co.uk) Web: [www.berrystockfeeds.co.uk](http://www.berrystockfeeds.co.uk)

**BERRYFIELDS FARM, DAVENTRY, NN11 8NP**



**THE MIDLANDS MART**

---

RUGBYFARMERSMART.COM

---

## **FORTHCOMING SALES**

**FRIDAY 25TH AUGUST**

**BREEDING SHEEP FAIR INCLUDING THE NSA RAM  
FAIR**

**Vendors who are wishing to sell stock  
please feel free to contact:**

**Tom Wrench** - 07774 723758 Market Manager & Auctioneer

**Tim Webster**- 07437 101163 Auctioneer & Fieldsman

**Emma Coupland**- 07808 271218 Fat Cattle Auctioneer

**Charlie Betteridge**- 07760266701 Fieldsman

**Nathan Shaw**-07460120293 Yard Manager

who will gladly make

**A FREE ON FARM VISIT & VALUATION**



---

**Follow us on social media:**

Facebook & Twitter - @RFMMidlandsMart

Instagram - rugbyfarmersmartLtd