

R-F-M

THE MIDLANDS MART

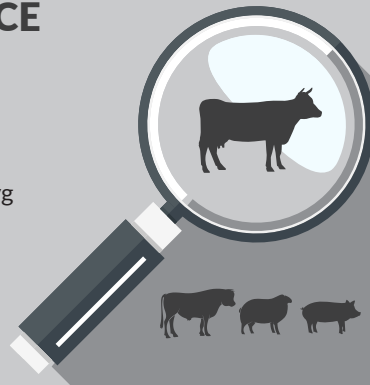
— RUGBYFARMERSMART.COM —

The Charolais Pavilion, Avenue M, Stoneleigh Park,
Kenilworth, Warwickshire CV8 2RG
02476 697731 | www.rugbyfarmersmart.com | 43/139/8013
Office hours: Monday to Friday - 9.00am - 5.00pm
Opening Time: Gates open at 5.30am until further notice

MARKET REPORT FOR MONDAY 17th JULY 2023

MARKET AT A GLANCE

Prime Steers to 300p/kg & £1858
Prime Heifers to 320p/kg & £2041
Prime Bulls to 285p/kg & £2157
Cows to 198p/kg & £1826
Prime Lamb SQQ 264p/kg (1847 Avg
£115)
Prime Lambs to 319p/kg & £155
Ewes to £170 (939 Avg £97)



FRIDAY 28TH JULY SALE OF BREEDING SHEEP

Catalogues & Entry Forms available by post, email or on the website
www.rugbyfarmersmart.com | admin@rugbyfarmersmart.com

CATTLE: 111 FORWARD



111 Prime Cattle forward consisting of 24 Steers, 59 Heifers, 6 Young Bulls and 22 over age Cattle.

More numbers forward sold to a very similar trade on the week. A very sweet show of Heifers regularly sold from 295 / 315ppk. Same again with the Steers, quality still holding its own. Bulls would sell well on the trade. Along with the Cows, a very varied show of Cows forward from best Charolais Cow to a run of Jersey cross overage steers.

In the clean it was Horace Witcomb, Klondyke Way that topped at 320ppk with other Heifers from the same home at 315 314 312 and 311 or to top at £2041.

The Tustian family also had some lovely clean forward with there Heifers selling to 314 and 309ppk. Topping the Bullocks as well the Tustian family at 300ppk or £1857.

The Bulls RR & M Lawrence never failing to disappoint at £2157 or 285ppk.

Cows as mentioned very varied however JC Bostock topped at 198ppk or £1825.

More Cattle wanted each week to meet demand

Auctioneer: Emma Coupland (07808 271218)

Len Eadon 1999-2022 Tribute page

<https://leneadon.muchloved.com/?fbclid=IwAR1QM9qsvxqscmyehDUwuJvjrR4KICliDqyezWbDYBEAsDaB164bZn50g4>

Photograph Request

Rugby Primestock Society are after any old pictures from past Rugby Primestock Shows for this year's 50th anniversary.

please could copies be emailed to Sophie admin@rugbyfarmersmart.com or sent to the market office. We can scan the photos and return the originals.

STEERS & BULLS

| Top prices per Head | | | | FA |
|---------------------|-------|-------|------------------|----|
| Limousin (Bull) | 776kg | £2157 | RR & M Lawrence | Y |
| Char (Bull) | 816kg | £2121 | E J Taylor & Son | Y |
| Limousin (Bull) | 682kg | £1943 | RR & M Lawrence | Y |
| South Devon (Bull) | 708kg | £1911 | C J Page | Y |
| Simmental | 794kg | £1857 | Tillbrook Farm | Y |

| Top prices per Kilo | | | | |
|---------------------|-------|--------|-----------------|---|
| Blonde | 560kg | 300ppk | J & H Tustian | Y |
| Limousin x | 602kg | 295ppk | L W Howe | Y |
| Limousin x | 634kg | 292ppk | J & H Tustian | Y |
| Limousin x | 642kg | 287ppk | J & H Tustian | Y |
| Limousin | 682kg | 285ppk | RR & M Lawrence | Y |

HEIFERS

| Top prices per head | | | | FA |
|---------------------|-------|--------|------------------|----|
| Limousin x | 648kg | £2041 | H & B A Witcomb | Y |
| Limousin x | 646kg | £2028 | H & B A Witcomb | Y |
| Limousin x | 658kg | £1914 | DTP & PA Walters | Y |
| Limousin x | 598kg | £1865 | H & B A Witcomb | Y |
| Limousin x | 604kg | £1842 | J & H Tustian | Y |
| Top prices per kilo | | | | |
| British Blue | 490kg | 320ppk | H & B A Witcomb | Y |
| Limousin x | 648kg | 315ppk | H & B A Witcomb | Y |
| Limousin x | 532kg | 314ppk | J & H Tustian | Y |
| Limousin x | 646kg | 314ppk | H & B A Witcomb | Y |
| Limousin x | 598kg | 312ppk | H & B A Witcomb | Y |

Prime Cattle & Cows arriving late

We reserve the right to remove the commission cap off cattle that arrive after 8:30am on a Monday.

Please could you ensure you also book them in with one of the numbers on the back page.

Many thanks

COWS

| | | | | |
|--------------------------|-------|--------|---------------------|----|
| Top prices per head Cows | | | | FA |
| Char | 922kg | £1825 | J C Bostock & Son | Y |
| Hereford | 768kg | £1474 | D J Hull & Partners | Y |
| Hereford | 744kg | £1473 | D J Hull & Sons | Y |
| Top prices per kilo | | | | |
| Char | 922kg | 198ppk | J C Bostock & Son | Y |
| Hereford | 744kg | 198ppk | D J Hull & Partners | Y |
| Simmental | 740kg | 196ppk | C H Evans & Son | |

SPRING LAMBS: 1847 FORWARD SQQ 264 P/KG AVG £115

Hard work from the start with a predicted poor trade throughout with no hunger for lambs. An SQQ of 265p/kg a sharp fall and in line with the trade throughout the morning if not a little sharper albeit the trade firming in the North in the Evening. Simply put Abbatoirs seem to have waiting lists of deadweight backed up at favourable prices at a time which sees slow Sales on the Continent and at home.

Trade difficult for all but weighted Lambs. Top 319p/kg for Beltex from IM Allen & Partners and 311p/kg for John Joe Morris. Messrs Claridge, Barnett and Ellingworth all 308p/kg. Heavies saw a top of 310p/kg for 50kg for new Customer JC Hutchinson with Texels. John Peebles, Shipston saw 46.5kg to 287p/kg and D Hopcraft 47.5kg to 278p/kg. Exports topping out at £136 for 45kg from AEJ & FJ Claridge and Humphrey Livestock 45kg to £130 with Messrs Webb 44kg to £130. Weight easier to sell and topping at £155 from JC Hutchinson with 50kg whilst Humphrey Livestock saw £146.50 at 58kg and Showell Farms £144 at 55kg. Hyde Lane and Di Hopcraft £140.

Auctioneer: Thomas Wrench

Sunday lairage is now open from 9am-3:00pm
Gates close 3:00pm **STRICTLY.**

SPRING LAMBS SQQ 264p/kg

| | | | |
|--------|---------|--------|---------------------|
| Beltex | 37.00kg | 319ppk | IM Allen & Partners |
| Texel | 37.00kg | 311ppk | JonJoe Morris |
| Beltex | 37.00kg | 308ppk | IM Allen & Partners |
| Texel | 37.00kg | 308ppk | S M Ellingworth |
| Texel | 37.00kg | 308ppk | J Barnett |

Per HEAD

| | | | |
|-------|---------|---------|--------------------|
| Texel | 45.50kg | £138.00 | AEJ & FJ Claridge |
| Texel | 45.00kg | £130.00 | Humphrey Livestock |
| Texel | 44.00kg | £130.00 | DJ & ST Webb |
| Texel | 45.00kg | £129.00 | AEJ & FJ Claridge |
| Char | 44.00kg | £125.00 | A J Breakespear |

Per Kilo **over 45kg**

| | | | |
|---------|---------|--------|------------------|
| Texel | 50.00kg | 310ppk | J C Hutchinson |
| Char | 46.50kg | 287ppk | John Peebles |
| Suffolk | 47.50kg | 278ppk | PD & DM Hopcraft |
| Suffolk | 50.50kg | 273ppk | M Bills |
| Texel | 50.00kg | 272ppk | A Williams |

Per HEAD

| | | | |
|---------|---------|---------|--------------------|
| Texel | 50.00kg | £155.00 | J C Hutchinson |
| Texel | 58.00kg | £146.50 | Humphrey Livestock |
| Texel | 55.00kg | £144.00 | Showell Farms |
| Texel | 55.00kg | £140.00 | Hyde Lane Farms |
| Suffolk | 52.50kg | £140.00 | PD & DM Hopcraft |

****FAT CATTLE TIMINGS****
COWS 8:30AM
PRIME CATTLE 9AM

CULL EWES: 939 FORWARD



Just under 1000 Ewes met a steadier trade on the week albeit still strong for meated Ewes. A large number of Grazers around today selling to a fast trade. No real strength about today but selling to £170 for Blue Texel Ewes from A Neal whilst R Heckford sold to £164 for Charolais and Messrs Ellingworth Texels to £163 equal with son John. Strong White Faces £160 mark regularly. Suffolks to £142 for D Dashwood with Crockwell Farms to £141. Suffolks with weight £135 plus throughout. Mules the hardest hit after last weeks efforts. Topping at £123 for Humphrey Livestock and £118 for M J Martin Mules as a rule around the £100 mark for meat.

Auctioneer: Thomas Wrench

EWES

| | | | | | |
|--------|------|-----------------|---------|------|---------------------|
| Beltex | £170 | A F Neal | B Texel | £163 | J Barnett |
| Char | £164 | R J Heckford | Texel | £162 | IM Allen & Partners |
| Texel | £163 | S M Ellingworth | Char | £162 | AC & RCW Turney |



AUTO GATES LTD

Bridge Farm, Holt Lane, Ashby Magna, LE17 5NJ

Trevor 07498993897/01455 202791

Email: tjautogate@gmail.com

Fitted to new or existing gates, wood or steel automated.

Sliding, swinging or cantilever.

STORE CATTLE: 210



An unseasonable yarding to 210 Store Cattle with numbers being found both from locally as well as Derbyshire, Leicestershire and Cornish contributions. Small weaned Cattle in good demand with Grass Cattle understandably harder to sell due to the lateness of the Season. Aged Cattle a swift trade and totally in opposition to the current Fat Cattle drops nationally.

Starting with Cows and Calves we saw a top of £1910 and £1900 for 8 year old Limousin Cows with smart March born Calves at foot from NG & RA Hart. Others £1680 for Simmentals from W R Eales & Son with twins.

Weaned Calves saw Bucket Blues done marvellously by Peebles Farm Services with 5-6m Blue Steers to £650, £620 and £600 and Heifers £555. Messrs Root sold 14 month Angus Steers at £1065 and 18 month at £1180. Messrs RJB then selling 11 month old Blonde Steers at £990 with Limousin Steers 8 months at £865. Limousin Heifers 12m to £820 and Blondes 15m to £840. J Hill, Lutterworth next selling Blues to £910 for Steers 15m and older Heifers £990 at 19m. A new Customer down from Osgathorpe saw Meyers and Davey with Summering Cattle sell to £890 for Blue Bucket Steers 15m with Herefords to £880 and Holsteins to £695. Messrs White, Epwell next in saw us up the ages selling Blue Steers 22m at £1290 and 20m to £1100. B Cummings down from Sutton Coldfield saw Steers at £1215 20m others £930 and Simmental Sisters 18m to £1045, Blues £990. Simon Bailey then in to take Beef Shorthorn Steers at £1150 18m. Park End Farming with another drag of Angus Bucket reared to top at £1080 for a trio of 21m Steers and sisters £800. J O Smith Ltd then saw Limousin x Steers 21m to £1355 and young Sister 17m at £1010. RJB then back with frame and hair to see a good support 15m Blonde Str to £1100 with 14m Devons £950 to £930. South Devons to £1140 for 16m with Limousin equal age £1100 and 17m to £1240. 19m Limousin Steers £1300 and £1205 with Sisters to £1020. Strength next saw J Jackson, Market Bosworth sell to £1510 for Blue Steers 27m old with others £1395. Black and Whites to £1195 for 22m. J Hill selling Fleckvieh Heifers 24m to £1200 before the day was rounded off by RWH Fenemore selling Shorthorn Framed Cattle to £1150 for Heifers 26m.

Auctioneer: Thomas Wrench



Farm insurance, the way it should be

We're a family-run business and pride ourselves on forging long term relationships with our farming and agricultural clients. Covering the Midlands, South West and South East, we deliver an extensive range of farm, agri business and equine policies tailored to you.

Farm & Equine **01865 290915**

General **01865 844998**

 Follow us **@County_Farm**

www.county-insurance.co.uk/farms



Independent Insurance Brokers County Insurance Services Limited. Address and Registered Office: County House, Glyme Court, Langford Lane, Kidlington, Oxon OX5 1LQ. Authorised and regulated by the Financial Conduct Authority (FCA) (FRN: 597267). Company registered in England No. 08411634

STORE LAMBS: 37 FORWARD

Store Lambs : 37 Forward

Typical summer numbers and Prime Lamb prices dropping made selling harder but sold well considering, topping at £83 for IC Markham

Store Goats : 16 Forward

Nice few goats about today , selling £46 to £75

Auctioneer :Tim Webster

”



https://www.justgiving.com/crowdfunding/diane-morris-2?utm_term=yn5YqNBDG

HARRIS & CLARKE
CHARTERED ACCOUNTANTS

...Specialising In Agriculture...

**Our team of staff has many years of
experience in dealing with the accountancy
and taxation affairs of farmers, landowners
and agricultural contractors**

**For further information or a free no
obligation meeting please contact**

John Harris

**7 Billing Road, Northampton, NN1 5AN
Telephone 01604 622274
www.harrisandclarke.co.uk**



RFM
THE MIDLANDS MART

*BREEDING SHEEP
SALES*



JULY 28th First Annual Breeding Sheep Fair
AUGUST 25th Breeding Sheep Fair Plus NSA Ram Sale
SEPTEMBER 16th Ewe Lamb & Wiltshire Horn Show & Sale
SEPTEMBER 29th Annual Ram Fair including Breeding Sheep

**CONTACT 02476697731 OR EMAIL
ADMIN@RUGBYFARMERSMART.COM
TO BOOK IN YOUR ENTRIES**



One Day Course / Driver cpc Training Day / Assessment
Welfare of Animals during Transport

The Jersey Cattle Society pavilion at Jersey House, 5th Street,
National Agricultural & Exhibition Centre, Stoneleigh, CV8 2LG
Saturday 29th July 2023

£90 + VAT including lunch and refreshments

For those wishing to take their Certificate of Competence assessment there will be an additional charge of £35 + VAT

This one day workshop has been arranged by Food and Farming Compliance Ltd. to provide an update and refresher training on the requirement of the laws to protect animals during transport and to provide 7hrs Driver cpc Periodic Training

On completion of the course, there will be the opportunity for course members to take the assessment paper for their Level 2 - Certificate of Competence - Award in Animal Transport by Road (Short Journey). Cattle, Sheep, Pigs, Goats, and Horses.

JAUPT - Joint Approvals Unit for Periodic Training

Approved Course: Welfare of Animals during Transport
(CRS11778/2040)

For further information or assistance and to book your place
Contact Nigel Durnford at Food and Farming Compliance Ltd.,
Telephone 01666 577723

E-mail: nigel.durnford@foodandfarming.co.uk

RFM

THE MIDLANDS MART

STORE CATTLE SALES 2023



JULY 13TH

AUGUST 10TH

SEPTEMBER 14TH

OCTOBER 12TH & 19TH

NOVEMBER 2ND, 9TH & 23RD

DECEMBER 14TH



+

STORE LAMBS

CONTACT 02476697731 OR EMAIL ADMIN@RUGBYFARMERSMART.COM
TO BOOK IN YOUR ENTRIES

RFM

THE MIDLANDS MART

CALF SALES 2023

JUNE 12TH & 26TH

JULY 10TH & 24TH

AUGUST 7TH & 21ST

SEPTEMBER 4TH & 18TH

OCTOBER 2ND, 16TH & 30TH

NOVEMBER 6TH & 20TH

DECEMBER 4TH & 18TH



CONTACT 02476697731 OR EMAIL ADMIN@RUGBYFARMERSMART.COM
TO BOOK IN YOUR ENTRIES

We invite you to visit our stand at
The Blakesley Show, 5th August '23

HOWKINS &
HARRISON

We're behind you every
step of the way.



Proud to support the **BLAKESLEY SHOW**

Working to support land owners, farmers, developers & stakeholders with all aspects of land strategy, planning, change of use & diversification of all types of buildings, sales, acquisition and management, throughout the region.

Exceptional service, complete peace of mind.

What can we help you with this year?

Contact one of our teams to discuss your land or property needs:

Ashby de la Zouch
01530 877977

Coventry
02476 227384

Lutterworth
01455 559203

Rugby
01788 564680

Henley-in-Arden
01564 793137

Atherstone
01827 721380

Daventry
01327 316880

Northampton
01604 823456

Towcester
01327 397979

The London Office
0207 839 0888

Planning / Estate Agency / Lettings / Auctions / Farm & Rural Services / Valuations

WE COVER SMALL FARMS, LARGE FARMS AND EVERYTHING IN BETWEEN



From sheep farmers to arable farmers.
Flower growers to poultry farmers.

NFU Mutual is proud to insure over 75% of UK farms with our Farm Select insurance. But we want more farms to benefit from great cover and local service. NFU Mutual has introduced Farm Essentials insurance – designed to meet the needs of smaller farms.

As your local agency, we are close by and can provide expert advice and hands-on support when you need it.

Call **Coventry Office** on **02476 444519**

NFU Mutual, 6 Eastwood Business Village,
Harry Weston Road, Binley Business Park,
Coventry, CV3 2UB



NFU Mutual
FARM INSURANCE

www.sgcontractingltd.com

Working within Northamptonshire
& surrounding counties

SGF CONTRACTING LTD

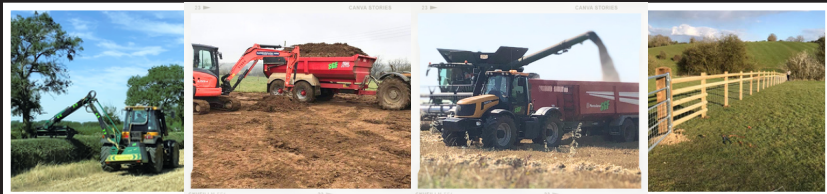
HEDGE TRIMMING

SGF

RUNNING MULTIPLE HI-CAPACITY MACHINES
6.5M REACH

SGF

GATEWAY TRIMMING & DEROGATION WORK UNDERTAKEN
FLAIL HEAD & QUADSAW FOR DE-LIMBING TREES AND HEDGE REDUCTION

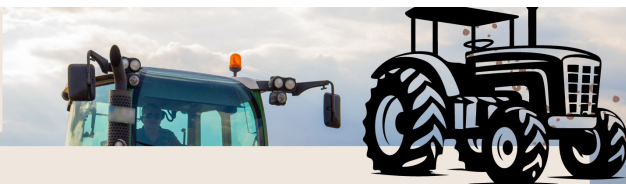


OTHER AGRICULTURAL WORK UNDERTAKEN INCLUDING:

HEDGE TRIMMING | FENCE ERECTING | GROUNDWORKS
TRACTOR & TRAILER HIRE | BALING & WRAPPING

Contact Josh for a quote on: 07930 654368 or 01604 740495

RFM
THE MIDLANDS MART



MACHINERY AUTUMN SALE FRIDAY 27TH OCTOBER

CONTACT 02476697731 OR EMAIL
ADMIN@RUGBYFARMERSMART.COM
TO BOOK IN YOUR ENTRIES





THE MIDLANDS MART

RUGBYFARMERSMART.COM

FORTHCOMING SALES

**FRIDAY 28TH JULY
SALE OF BREEDING SHEEP**

**Vendors who are wishing to sell stock
please feel free to contact:**

Tom Wrench - 07774 723758 Market Manager & Auctioneer

Tim Webster- 07437 101163 Auctioneer & Fieldsman

Emma Coupland- 07808 271218 Fat Cattle Auctioneer

Charlie Betteridge- 07760266701 Fieldsman

Nathan Shaw-07460120293 Yard Manager

who will gladly make

A FREE ON FARM VISIT & VALUATION



Follow us on social media:

Facebook & Twitter - @RFMMidlandsMart

Instagram - rugbyfarmersmartLtd