

R-F-M

THE MIDLANDS MART

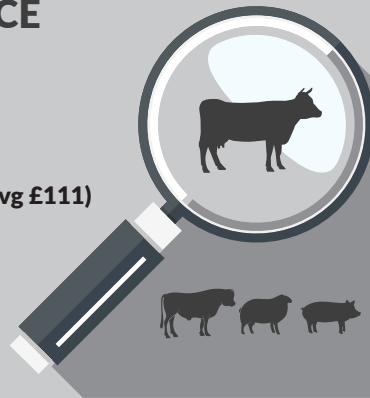
— RUGBYFARMERSMART.COM —

The Charolais Pavilion, Avenue M, Stoneleigh Park,
Kenilworth, Warwickshire CV8 2RG
02476 697731 | www.rugbyfarmersmart.com | 43/139/8013
Office hours: Monday to Friday - 9.00am - 5.00pm
Opening Time: Gates open at 5.30am until further notice

MARKET REPORTS FOR MONDAY 17TH OCTOBER 2022

MARKET AT A GLANCE

Prime Steers to 339p/kg & £2214
Prime Heifers to 324p/kg & £2370
Prime Bulls to 257p/kg & £1701
Cows to 225p/kg & £1687
Prime Lamb SQQ 244p/kg (1937 Avg £111)
Prime Lambs to 350p/kg & £166
Calves to £345 (46)
Ewes to £180 (1083 Avg £98)



THURSDAY 20TH OCTOBER STORE CATTLE & STORE LAMB SALE

Catalogues & Entry Forms available by post, email or on the website
www.rugbyfarmersmart.com | admin@rugbyfarmersmart.com

CATTLE: 177 FORWARD



On Monday 17th October 2022 Rugby Farmers Auction held their weekly sale of Primestock.

131 Prime Cattle forwarded included -
10 Young Bulls to 257ppk or £1701.34
63 Prime Bullocks to 339ppk or £2213.86
42 Prime Heifers to 324ppk or £2370.00
16 OTM Cattle 225ppk or £1687

A busy day in the cattle ring yet again. Best cattle remaining at the dizzy heights, however the dairy bred cattle would be less money on the week.

Young Bulls -

Again varied show of bulls with no super stars forward.

Topping the day was Alan Tacy with a Simmental bull at 257ppk or £1701.34 with another run of bulls at 271ppk or £1907.84

Prime Bullocks - Generally a cracking run of bullocks, the quality just keeps coming. Best smart bullocks were a fantastic trade, unbeatable anywhere in the country. 20 of the bullocks forward sold over £1900.

DN Burbidge, Lubenham tops at a 339ppk with an utter machine.

Another bullock from the same home tops at £2213.

Prime Heifers- Again a handful of sweet heifers definitely short of the shop heifer quality. As a rule more a commercial show of heifers but with plenty of finish across all types.

Josh Trivett still at the top with his homebred heifer at 324ppk.

Robert Nichols returns back with some clonking heifers selling to £2370.

OTM & Cull Cattle.

Mixed entry of cows, under weight lean non farm assured cows would be steadier. Anything in spec with weight and meat another very good trade.

Frank Page tops at 225ppk or £1647.

JB Tyrrell tops pounds per head at £1687.20

Auctioneer: Emma Coupland (07808 271218)

STEERS & BULLS

Top prices per Head				FA
Limousin x	694kg	£2214	D N Burbidge	Y
Limousin x	708kg	£2131	D N Burbidge	Y
British Blue	638kg	£2061	P M Jarrom	Y
Limousin	642kg	£2054	N A S Johnson	Y
Limousin x	634kg	£2054	Page Bros	Y

Top prices per Kilo				
Limousin x	586kg	339ppk	D N Burbidge	Y
Limousin x	634kg	324ppk	Page Bros	Y
British Blue	638kg	323ppk	P M Jarrom	Y
Limousin x	628kg	321ppk	Page Bros	Y
Limousin	642kg	320ppk	N A S Johnson	Y

HEIFERS

Top prices per head				FA
Limousin x	750kg	£2370	R F & J A Nichols	Y
Charolais x	756kg	£2253	R F & A J Nichols	Y
Limousin	690kg	£2236	RW & HER Trivett	Y
Limousin x	734kg	£2195	R F & A J Nichols	Y
Aberdeen Angus	734kg	£1894	R Ellis & Son	Y
Top prices per kilo				
Limousin	690kg	324ppk	R W & HER Trivett	
Limousin x	750kg	316ppk	R F & A J Nichols	Y
Limousin	504kg	300ppk	P A Woodward	Y
Limousin x	734kg	299ppk	R F & J A Nichols	Y
Charolais x	756kg	298ppk	R F & J A Nichols	Y

Len Eadon 1999-2022 Tribute page

<https://leneadon.muchloved.com/?fbclid=IwAR1QM9qsvxqscmyehDUUwUvjrbR4KICliDqyezWbDYBEAsDaB164bZn50g4>

**** FAT CATTLE WILL NOW BE SOLD AT 9AM ****

COWS

Top prices per head Cows				FA
Charolais (bull)	912kg	£1687	JF & BM Tyrell & Son	Y
Limousin x	732kg	£1647	Page Bros	Y
Limousin x	830kg	£1627	R W Cross & Partners	Y
Limousin x	730kg	£1460	Page Bros	Y
Top prices per kilo				
Limousin x	732kg	225ppk	Page Bros	Y
Aberdeen Angus	568kg	200ppk	AE & AM Tacy	Y
Limousin x	588kg	200ppk	R J Heckford	Y
Limousin x	730kg	200ppk	Page Bros	Y

SHEEP: 3416 FORWARD PRIME LAMBS: 1980 FORWARD SQQ 244P/KG AVG £111



Two pens short of 2000 Lambs met a difficult trade for all but the meat. Farmers not heeding advice and Export lambs remain hard to sell with plentiful supply of cheap lightweight bodies floating around on the Trade. An SQQ of 243p/kg again a great return on comparison to alternatives. Export trades remain the hardest to fit and home trade lambs dominating the best end returns. Top today in Export weights to 286p/kg at 42kg from R Richins, Oxford with 40kg from S H Gunn, Newark seeing a pen of 15 to 280p/kg also selling 38.5kg at 275p/kg. Export lambs generally 240 to 250p/kg with better sorts 250 to 260p/kg. Weighted lambs a better demand seeing a top of 307p/kg for 46kg from N Freeman selling to 286p/kg with R Richins 48kg to 273p/kg and R Leach 49kg to 272p/kg and 46kg 271p/kg. Meat almost exclusively north of 250p/kg. An all in avg of £111 requiring a kill sheet over 22kg avg to return within a £1 and no deductions!! Export weight lambs topping at £120 for 42kg from R Richins with 45kg £120 for P East and 44kg £116 for MFH Farming equal with B Burton and G Fountaine. Overall Roger Coombes last man in but King of the Castle selling to £166 at 70kg and £153 at 57kg with E J Taylor 70kg at £152 and R Leach 57kg to £150. Lamb trade remains stagnant with Export sales slow and numbers plentiful. We await the shift to root feeding but Vendors must be aware that lean half meat lambs hold almost no demand in current trading climates.

Auctioneer: Tom Wrench

PRIME LAMBS : SQQ 243p/kg

Per Kilo **under 45kg**

Beltex x	42.00kg	286ppk	R Richins
Charollais x	40.00kg	280ppk	SH Gunn Ltd
Charollais x	38.00kg	279ppk	D Gardiner
Texel x	38.50kg	275ppk	SH Gunn Ltd
Beltex x	40.00kg	270ppk	R Richins

Per HEAD

Beltex x	42.00kg	£120.00	R Richins
Beltex x	45.00kg	£117.00	P J East
Texel x	44.00kg	£116.00	MFH Farming
Charollais x	45.00kg	£116.00	B C Burton
Beltex x	45.00kg	£116.00	GR Fountaine & Son

Per Kilo **over 45kg**

Beltex x	46.00kg	307ppk	N Freeman
Beltex x	48.00kg	273ppk	R Richins
Texel x	49.00kg	272ppk	R F Leach
Texel x	47.00kg	271ppk	R F Leach
Beltex x	52.50kg	270ppk	P S Bodily

Per HEAD

Texel x	70.00kg	£166.00	D G Coombes
Texel x	57.00kg	£153.00	D G Coombes
Charollais x	70.00kg	£152.00	E J Taylor & Son
Texel x	57.00kg	£150.00	R F Leach
Charollais x	63.00kg	£148.00	BF Humphrey

CULL EWES: 1083 FORWARD



A sale of 1000 plus but with two of the Countries main end users absent trade harder throughout. Ewe demand very short across the Country with numbers of Supply at record highs at a time of short demand. Best Ewes not big on numbers with shape present but no real weight. Top Ewes today £180 for VJ Roots with Beltex x Rams and £170 for Texel x Rams from T W Sammons with Suffolk Rams £150 for RFS Ltd. Tex Ewes to £150 for TG White. Weighted Ewes generally £140 plus. Suffolk Ewes to £129 and £126 and generally £120 mark. Mules to £116 for Armstrong Partners and £113 for C Stubbs. Mules generally either side of £100. Lean Ewes again plentiful.

Auctioneer: Tom Wrench

EWES

Texel x	£180	V J Roots	X Bred	£150	D W Gurney & Son
Texel x	£170	T W Sammons	Texel x	£150	T G White
Suffolk x	£150	RFS Ltd	Charollais x	£148	RFS Ltd



STORE SHEEP: 353 FORWARD

A few more buyers about today though trade slightly easier with more smaller lambs forward

AG Clark topped the trade with Texel's to £94

Please note we have a special store Lamb sale this Thursday 29th October 10.30am

Messrs GR Fountaine & Son sold a Full Mouth Texel x Ram for £210 to Messrs GA Stanton & Son before the Store Lamb sale

Auctioneer Tim Webster

WANTED

Shepherd/ess wanted for full / part-time position based south of Banbury, please contact Sam on 07963874482 for more information

WANTED

Livery yard/ farm worker
Looking for a hard working reliable person to join our team.
Flexible Hours
Call 02476301930

CALVES: 46 FORWARD



Baby Calves : 40 Forward

A smaller entry though far better quality and more buyers present encouraged a good trade.

Confidence seems to be returning in the calf section over months of difficult trading

Today we held the latest StowAg Show and Sale with Andrew Hall being deemed the winner for his British Blue Heifer and received the £25 voucher from StowAg and also £25 voucher to the purchaser Messrs RW & H Trivett

British Blue Bulls	£245 to £345
British Blue Hfrs.	£150 to £305
Simmental Bulls.	£190 to £245
Simmental Hfrs.	to £140
Limousin Bulls.	to £245
Limousin Hfrs.	to £155
Hereford Bulls.	to £155
Hereford Hfrs.	£85 to £112
Angus Bulls.	£100 to £135
Angus Hfrs.	to £95
Holstein Bulls.	to £30

Weaned Calves : 6 Forward

All stock today came from Leam Farm Partners

4/5mo Limousin Steers to £565
6mo Angus Steers to £405
6mo Angus Hfrs. to £430
5mo Simmental Steers to £495
5mo Simmental Hfrs £455 to £495

Auctioneer Tim Webster

On instructions from Mr John Underhill.

An almost complete garage dispersal sale.

To include: 2008 Saab 9-3 1.9TiD Vector Convertible, 1992 Saab 900 XS 2.0,
1989 Peugeot 205 1.6 Automatic, 1986 Saab 900i 2.0.

Together with: Eight cars for light recommissioning and restoration including Rolls Royce
Silver Shadow, four 2.5T & 3T vehicle lifts, incomplete vehicles for spares or repairs.

Plus: Workshop equipment, garage and warehouse equipment, classic and vintage specialist
items, motoring bygones & memorabilia and vehicle spares.

**To be held at Wood End Farm, Woodby Lane,
Bitteswell, Lutterworth, Leicestershire, LE17 4LP.**

**To be sold by auction on the premises on
Saturday 22nd October 2022 at 10.30am**

SALE ARRANGED AT SHORT NOTICE

On instructions from Mr Edwin Bugeja, Edwin's Autos Ltd (due to retirement)

A complete garage dispersal sale.

To include: 2007 Ford Transit T350 Beavertail Recovery truck,
Complete Boston MOT testing bay equipment.

Together with: Tecalemit 2.8t 2 post 400v vehicle lift, Tecalemit 3.2t 2 post 400v vehicle lift,
Tecalemit 3.0t 2 post 400v vehicle lift.

Plus: Two 6m steel shipping containers with barn doors, 7.6m secure welfare cabin with WC,
kitchen and locker room, Qty of workshop roller shutter doors
and a comprehensive range of modern workshop equipment.

**To be sold by auction on the premises at
52 – 54 Kenilworth Road, Balsall Common, Coventry, CV7 7EX
and online via MartEye (in association with Melton Mowbray Market)
on Monday 24th October 2022 at 12 Noon.**

The Midlands Produce Auctions

will start on Tuesday 29th November 2022 at Lutterworth Rugby Football Club and run
through to March. To enter any produce please contact Gilly on 07921 511852
or visit the website to download an entry form.

established over 25 years

DEDDINGTON LIQUID WASTE

Experts in the disposal of domestic and commercial liquid waste

We empty

SEPTIC TANKS • CESS PITS/TANKS • TREATMENT PLANTS
GREASE TRAPS • INTERCEPTORS



OXFORDSHIRE • NORTHAMPTONSHIRE • GLOUCESTERSHIRE • BUCKINGHAMSHIRE • WARWICKSHIRE • LEICESTERSHIRE

phone: 01327 260905

email: service@deddingtonliquidwaste.co.uk

www.deddingtonliquidwaste.co.uk

gp

GODFREY-PAYTON
CHARTERED SURVEYORS

For sale by Private Treaty

PASTURE LAND FOR SALE

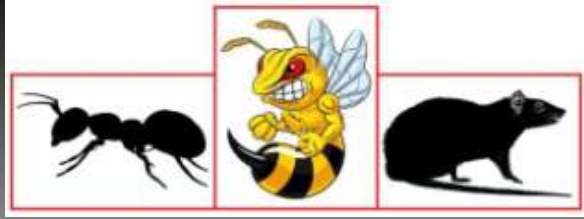
Located at London Road, Willoughby,
near Rugby

4.80 acres of amenity Pasture land

Offers in excess of £65,000

All enquiries: 01926 492511

www.godfrey-payton.co.uk



RDB Pest Control

Reliable | Trustworthy | Fast | Effective
Competitive Prices

Ryan Brunt

07922 091 459

www.rdbpestcontrol.co.uk

Why You Should Choose Us

- ✓ Cater for Red Tractor and Farm Assurance Schemes
- ✓ Wide ranging experience on Farms with over 25 existing routine agricultural clients
- ✓ Fully qualified - RSPH Level 2 in Pest Control
- ✓ Trustworthy and security vetted
- ✓ Prompt, reliable fast response

A selection of sites where I have experience:

Farmers Market • Local Airport • Farms • Warehouses •
Industrial Estates • Food Premises • Private Houses • Country
Estates • Building Sites • Local Councils • Schools •
Day Nurseries • Care Homes



RUGBY PRIMESTOCK SOCIETY

Monday 28th November 2022



Home baking – Fruit Cake

Ingredients:

225g (8oz) S R Flour
1 tsp mixed spice
½ tsp ground cinnamon
½ tsp ground nutmeg
175g (6oz) butter
175g (6oz) soft brown sugar
1 tbsp black treacle
1 tsp each grated orange and lemon rind
4 eggs
550g (1 ¼ lb) mixed dried fruit
100g (4oz) chopped mixed peel
50g (2oz) glacé cherries
15ml milk

To finish:

Brandy to feed

Method:

Pre-heat the oven to 150°/300°F/Gas 2. Grease and line an 8in (20cm) deep round cake tin with a double layer of greased greaseproof paper.

Sift flour with spice, cinnamon and nutmeg.

Cream butter with sugar, treacle and orange and lemon rind.

Beat in eggs, one at a time, and adding 1 tbsp of sifted dry ingredients with each other. Stir in mixed fruit, chopped peel, and cherries.

Fold in dry ingredients alternately with milk.

Transfer to prepared tin and smooth top with a knife. Bake for 4 – 4 ½ hours or until a skewer comes out clean. Leave in tin for 15 minutes then turn out onto a wire cooling rack.

When cool, pierce the cake at intervals with a fine skewer and feed with a little brandy. Wrap the completely cold cake in a double layer of greaseproof paper and again in foil and store in a cool place for up to 3 months, feeding at intervals with more brandy.

Leave undecorated.



RUGBY PRIMESTOCK SOCIETY



49th Christmas Show & Sale

Monday 28th November 2022



Cattle

Sheep

Produce

Butchers sausages & pork pies

Home baking fruit cake & mince pies

Schedule and entry form available from the secretary:

rugbyprimestocksociety@outlook.com

Or call

Heather: 07899 916332

Entries close Monday 14th November 2022



Farm insurance, the way it should be

We're a family-run business and pride ourselves on forging long term relationships with our farming and agricultural clients. Covering the Midlands, South West and South East, we deliver an extensive range of farm, agri business and equine policies tailored to you.

Farm & Equine **01865 290915**

General **01865 844998**

 Follow us **@County_Farm**

www.county-insurance.co.uk/farms


County
Insurance Services

Independent Insurance Brokers County Insurance Services Limited. Address and Registered Office: County House, Glyme Court, Langford Lane, Kidlington, Oxon OX5 1LQ. Authorised and regulated by the Financial Conduct Authority (FCA) (FRN: 597267). Company registered in England No. 08411634

WE COVER SMALL FARMS, LARGE FARMS AND EVERYTHING IN BETWEEN



From sheep farmers to arable farmers.
Flower growers to poultry farmers.

NFU Mutual is proud to insure over 75% of UK farms with our Farm Select insurance. But we want more farms to benefit from great cover and local service. NFU Mutual has introduced Farm Essentials insurance - designed to meet the needs of smaller farms.

As your local agency, we are close by and can provide expert advice and hands-on support when you need it.

Call **Coventry Office** on **02476 444519**
NFU Mutual, 6 Eastwood Business Village,
Harry Weston Road, Binley Business Park,
Coventry, CV3 2UB



NFU Mutual
FARM INSURANCE

FOR SALE

Qty of calf bucket holders & 2x calf coats (s799)
Call 07816134705

FOR SALE

Hyline point of lay hens and growing birds for sale.
Brown egg layers suitable for free range or deep litter.
contact Mark Martin on;
07976 260 775

WANTED

Muck bags wanted so Leah and Clara (the lovely young drover girls) can continue to fund their uni social life!
Please drop them at the market if you have any sitting around
Thank you

FOR SALE

Aberdeen Angus Bulls for sale
Good Growth, Easy Calving
Call 01827872267 or
07807191025

T.A.R HIRE

FOR HIRE:

○ **10 & 14 TON REAR MUCK SPREADERS**

○ **12 TON TRAILERS WITH SILAGE SIDES**

○ **ROAD SWEEPER**

○ **FLAT TRAILERS**

○ **GRASS TOPPERS**

○ **CONTRACT MUCK**

○ **SPREADING SERVICES**

CONTACT:

DAVENTRY (ROB) - 07801791212

HINCKLEY (ALAN) - 07802951179

FINISHING CATTLE? GROWING CATTLE? FEEDING SHEEP?

BERRYSTOCK FEEDS



Do you want **HIGH PERFORMANCE, COST EFFECTIVE, FULLY ASSURED and COMPLETE FEEDS?** Then contact **BERRYSTOCK FEEDS:**

Tel: 01788 890320 E-Mail: john@berryfieldsfarm.co.uk Web: www.berrystockfeeds.co.uk

BERRYFIELDS FARM, DAVENTRY, NN11 8NP

RFM

THE MIDLANDS MART

RUGBYFARMERSMART.COM

FORTHCOMING SALES

**THURSDAY 20TH OCTOBER
SALE OF STORE LAMBS & STORE CATTLE**

**Vendors who are wishing to sell stock
please feel free to contact:**

Tom Wrench - 07774 723758
Tim Webster- 07437 101163
Emma Coupland- 07808 271218

who will gladly make

A FREE ON FARM VISIT & VALUATION



Follow us on social media:

Facebook & Twitter - @RFMMidlandsMart

Instagram - rugbyfarmersmartltd