

# R-F-M

## THE MIDLANDS MART

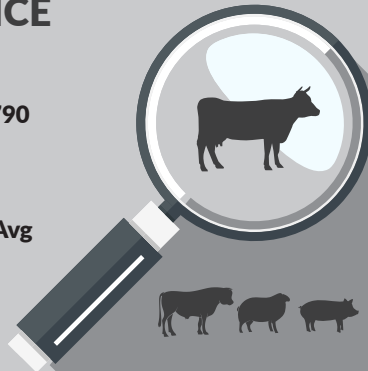
— RUGBYFARMERSMART.COM —

The Charolais Pavilion, Avenue M, Stoneleigh Park,  
Kenilworth, Warwickshire CV8 2RG  
02476 697731 | [www.rugbyfarmersmart.com](http://www.rugbyfarmersmart.com) | 43/139/8013  
Office hours: Monday to Friday - 9.00am - 5.00pm  
Opening Time: Gates open at 5.30am until further notice

## MARKET REPORTS FOR MONDAY 28TH FEBRUARY 2022

### MARKET AT A GLANCE

**Prime Steers to 282p/kg & £1907**  
**Pr Vime Heifers to 286p/kg & £1790**  
**Prime Bulls to 216p/kg & £1305**  
**OTM Cattle to 220p/kg & £1712**  
**Cows to 198p/kg & £1530**  
**Prime Hogg SQQ 275p/kg (1514 Avg  
£118.50)**  
**Prime Hogs to 337p/kg & £169**  
**Store Lambs to £116 (247)**  
**Ewes to £203 (912 Avg £121.5)**



## THURSDAY 3RD MARCH SALE OF STORE CATTLE

Catalogues & Entry Forms available by post, email or on the website  
[www.rugbyfarmersmart.com](http://www.rugbyfarmersmart.com) | [admin@rugbyfarmersmart.com](mailto:admin@rugbyfarmersmart.com)

## CATTLE: 92 FORWARD



We requested and you delivered with just under 100 Cattle forward and sold to a flying trade well ahead of comparison. It is an interesting calculation to undertake when taking 55% kill percentage at a £4.12 deadweight base price this recalculates to return a Market equivalent of 226p/kg live weight. Very few Cattle do hit this 55% mark from the weekly kill sheets we have returned and furthermore £4.12 is a base price not taking account of grade. Today almost all finished Cattle O or better exceeded 226p/kg by some distance. The live ring is doing its job.

### Steers;

Super feeding and quality at the top end today with Blue Steers from PJ Services showing U Grades with fully feeding to a top of 282p/kg and others 273p/kg. Weighted Steers from J Jackson took U- to 260p/kg and heavies from PJ Services 255p/kg. R Grades to 238p/kg from J Stephens with Grades all over 235p/kg. O+ grades to 233. Top gross £1907 and £1849 for P J Services.

### Heifers;

Meat all around with O Grade Cattle very well finished fought for to the death. Top of the trade though Butchers Heifers from ME & CF Williams, Market Harbrough selling properly finished Limousin Medium weights to 286p/kg. at U- with sweet heifers from M Jackson to 276p/kg and R Grade but fully finished Limousin from J D Stephens to 260p/kg. The Essex Bus showed weight and finish today topping at 260p/kg for South Devons. R Grades all over 249p/kg and rows of O+ grade Heifers trading 230 to 240p/kg. Top gross though with weight to £1790 for G Burchell, Oxford and £1768 from G Allen, Bicester. Meat rewarded and feeders reaping the rewards.

### Bulls;

Natives today from Alan Tacy but returning 216p/kg and £1305. Bulls always wanted.

### OTM;

Shape and weight the order of the day for N Foster when selling 34m old Steers returning 220p/kg and £1712. Such is the buoyancy that today Holstein slip Heifers 31m from FE & CJ Barnett took 199p/kg and £1323 whilst JK Smith and Sons Slip at 45m took £1323.

### Cows;

A returning account to ringside and Cows took another step forward. Meat the key and rewarded. Fed Cows to 198p/kg from ME & CF Williams whilst weighted Angus Cows from JA & S Wrench R Grades 171 and 175p/kg. Plenty of O Grades well over 160p/kg and even Lean Cows travelling well past 140p/kg. Top Gross £1530 and £1501 to JA & S Wrench with Messrs Williams all but £1500 also.

*Auctioneer: Tom Wrench*

**PLEASE CAN ALL FAT CATTLE VENDORS ENSURE THEY ARE IN THE MARKET BEFORE 9AM THANK YOU!**

## Len Eadon 1999-2022 Tribute page

<https://leneadon.muchloved.com/?fbclid=IwAR1QM9qsvxqscmyehDUwuJvirbR4KICliDqyezWbDYBEAsDaB164bZn50g4>

The Board of Directors are delighted to announce that RFM will be working with Andy, Lynda and the Eadon family to hold a Memorial Day in loving memory of Len Eadon within the Market.

Please follow the tribute page for future updates.

## STEERS & BULLS

Top prices per Head				FA
British Blue	676kg	£1906	P J Services	Y
British Blue	676kg	£1849	P J Services	Y
British Blue	722kg	£1841	P J Services	Y
Limousin x	708kg	£1841	J Jackson	Y
Charollais x	768kg	£1775	D J Hull & Partners	Y

Top prices per Kilo				
British Blue	676kg	282ppk	P J Services	Y
British Blue	676kg	273.5ppk	P J Services	Y
Limousin x	708kg	260ppk	J Jackson	Y
British Blue	722kg	255ppk	P J Services	Y
Limousin x	694kg	238.5ppk	J D Stephens	Y

## HEIFERS

Top prices per head				FA
Salers	744kg	£1789	G J Burchell & Sons	Y
Simmental	796kg	£1767	GJ & MP Allen	Y
Charolais x	734kg	£1732	D J Hull & Partners	Y
Charolais x	674kg	£1668	M W Emery	Y
Limousin x	656kg	£1656	M W Emery	Y
Top prices per kilo				
Limousin	546kg	286ppk	ME & CF Williams	Y
Limousin x	596kg	276ppk	Mark Jackson	Y
Limousin x	546kg	260ppk	J D Stephens	Y
South Devon	622kg	259.5ppk	D J Hull & Partners	Y
British Blue	648kg	253ppk	P J Services	Y

**PLEASE COULD ALL VENDORS BOOK IN STOCK,  
EITHER BY A QUICK CALL, TEXT OR EMAIL THANK YOU!**

Office: 02476697731 | Email: [admin@rugbyfarmersmart.com](mailto:admin@rugbyfarmersmart.com) | Tom: 07774723758

## COWS

Top prices per head Cows					FA
British Blue	778kg	£1712	N J Foster	Y	
Limousin x	874kg	£1530	J A & S Wrench	Y	
Aberdeen Angus	878kg	£1501	J A & S Wrench	Y	
British Blue	756kg	£1497	ME & CF Williams	Y	
Top prices per kilo					
British Blue	778kg	220ppk	N J Foster	Y	
Friesian	664kg	199ppk	FE & CJ Barnett	Y	
British Blue	756kg	198ppk	ME & CF Williams	Y	
Limousin x	646kg	191ppk	J D Stephens	Y	



**SHEEP: 2673 FORWARD**

**PRIME HOGGS: 1514**

**FORWARD SQQ 275P/KG AVG £118.50**

Numbers harder to find as vendors report a lack of finish. Evidenced today by a number of poor under finished sorts forward. The February doldrums continue and buyers very wary of a poor mornings sales. That said Export weight and best fed of all weight holding their trade. Lean Hoggs harder to sell. An SQQ though of 274p/kg well at the top and without compare to deadweight comparison. More importantly an all in avg of £118.50 a continued statement of good fortune for the Farmer. Top today 337p/kg for 38kg from PJ Incley with city shape 33kg to 321p/kg from k Taylor. K Crabtree 40kg to 318p/kg and 38kg 317p/kg. Shape and meat all over 300p/kg albeit finish a rare commodity today. Heavies well contested considering last weeks issue with weighted Hoggs. Best end though chased and 54kg from DS & LE Wadland to 311p/kg whilst 55kg from the same 307p/kg, 48kg 292 and 54kg 292p/kg. Most weighted Hoggs trading 240 to 245p/kg. In the lump a top of £132.50 at 44kg from Henry Tustian in the Export section. With £130 at 44kg from D W Gurney and DP Mitchell & Son 44.5kg at £130. 38kg from P J Incley £128. Overall weight topping out at £169 and £168 for 54 and 55kg from DS & LE Wadland also taking £157.50 and £150. £149 to T Wood at 75kg and 52kg from Henry Tustian to £143. Trade simply lolloping along with Sales very slow. Another payday and commencement of a new month hopefully the key. Farmers though should not add to the Supply excess issue by offloading Hoggs before they are fully done.

*Auctioneer: Tom Wrench*

## PRIME HOGGS : UNDER 45.5kg SQQ 275p/kg

Beltex x	38.00kg	337ppk	P J Incley
Charollais x	33.00kg	321ppk	K Taylor
Texel x	31.50kg	321ppk	Bailey & Moore
Beltex x	40.00kg	318ppk	K Crabtree
Beltex x	38.00kg	317ppk	K Crabtree

Per HEAD

Texel x	44.00kg	£132.50	J & H Tustian
Texel x	44.00kg	£130.00	DW Gurney & Son
Beltex x	44.50kg	£130.00	DP Mitchell & Son
Beltex x	38.00kg	£128.00	P J Incley
Beltex x	40.00kg	£127.00	K Crabtree

## PRIME HOGGS : OVER 45.5 kg

Per Kilo

Beltex x	54.50kg	311ppk	DS & LE Wadland
Charollais x	55.00kg	307ppk	DS & LE Wadland
Charollais x	54.00kg	292ppk	DS & LE Wadland
Charollais x	48.00kg	292ppk	DS & LE Wadland
Charollais x	48.50kg	291ppk	DS & LE Wadland

Per HEAD

Texel x	55.00kg	£169.00	DS & LE Wadland
Texel x	54.00kg	£168.00	DS & LE Wadland
Texel x	54.00kg	£157.50	DS & LE Wadland
Charollais x	53.00kg	£150.00	J & H Tustian
Texel x	75.00kg	£149.00	T Wood

Sunday lairage is now open from 9am-4:30pm  
Gates close 4:30pm **STRICTLY.**

### FOR SALE

Lamb creep feeder for sale 4ft by 5ft 6  
PLUS  
Big quantity of round bale hay  
Call 07927993450 (1188)

## CULL EWES: 912 FORWARD



Just shy of 1000 Ewes returning an Avg of £122 despite a wealth of rare-breeds and grazers. Simply flying throughout with Buyers desperate for numbers. A trade that surely is not sustainable with some Ewes now needing to be sold well in excess of the trade for heavy Cutting Lambs on the markets. Great news for vendors though. Top today a young breeder in M Toon selling Texels to £203 with another young lady J Herod to £198 and DS & LE Wadland Charollais Ewes to £196. Any meated bred Ewes today selling well past £170 with top Rams £175 for J Duggins, Swadlincote. K Butcher, Essex Tex x Ewes to £190 and SM & CR Collinswood £185. Suffolks today topping at £165 from MFH Farming with large pens and £160 for WG & SW Jones.. Others £155 from MFH. Mules on fire today and as dear as has been witnessed. Topping at £147 for AC & RCW Turney who also sold to £143 and M Clarke £141. K P Stephens £140. Trade generally seeing Meated Mules £123 plus.

*Auctioneer: Tom Wrench*

### EWES

Texel x	£203	M Toon	Texel x	£188	SM & CR Collinswood
Texel x	£198	J Herod	Texel x	£185	J Herod
Texel x	£196	DS & LE Wadland	Texel x	£184	M Toon
Charollais x	£190	K Butcher	Texel x	£180	DS & LE Wadland



## STORE LAMBS: 247 FORWARD

A modest entry though prices remained strong despite Prime being easier.

Messrs D & GM Wright topped the day with meaty sorts at £116 for Charollais Lambs

We had a new buyer in attendance today who was keen on all types and breeds which certainly helped the trade

*Auctioneer : Tim Webster*

### WANTED

General Book Keeper & Farm Admin  
For large Sheep & Forage Enterprise in  
Chipping Norton  
Call 07813314851

### WANTED IMMEDIATELY

Livestock Buildings to rent in proximity  
to Stoneleigh

Call 07774723758

Here for *you*

We are all aware of the many stresses involved with the farming industry which can affect people of all ages.

Please do feel free to ring me personally at any time for a confidential chat or any other support.

Alternatively, the national charity Farming Community Network is here to confidentially support all in the farming community;

[www.fcn.org.uk](http://www.fcn.org.uk) helpline 0300 111 999

We are all here to help and support each other – please stay safe and well.

Revd. Barbara Clutton (Market Chaplain) 01788 810372,  
07808 137550 barbaraclutton@hotmail.com

## **HARRIS & CLARKE** CHARTERED ACCOUNTANTS

*...Specialising In Agriculture...*

**Our team of staff has many years of  
experience in dealing with the accountancy  
and taxation affairs of farmers, landowners  
and agricultural contractors**

**For further information or a free no  
obligation meeting please contact**

**John Harris**

7 Billing Road, Northampton, NN1 5AN  
Telephone 01604 622274  
[www.harrisandclarke.co.uk](http://www.harrisandclarke.co.uk)



## FOR SALE

Wooden walk through sheep racks  
Various lengths, good order & ready to use  
Call 01295660245

## FOR SALE

Mchale Bale Handler  
Round Bale Spike with tubes, pin & cone brackets £600 ono  
Call 07836751120 (W579)



*Your local, independent fuel supplier*



Heating Oil



Gas Oil  
& Diesel



Lubricants  
& Additives



Superheat  
35



Fuel Tanks



AdBlue®



[www.rix.co.uk](http://www.rix.co.uk)



01675 419187

2018  
**Gold  
Trusted  
Service**  
★★★★★  
feefo



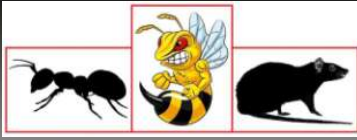
## AUTO GATES LTD

Bridge Farm, Holt Lane, Ashby Magna, LE17 5NJ  
Trevor 07498993897/01455 202791

Email: [tjautogate@gmail.com](mailto:tjautogate@gmail.com)

Fitted to new or existing gates, wood or steel automated.  
Sliding, swinging or cantilever.





# RDB Pest Control

Reliable | Trustworthy | Fast | Effective  
Competitive Prices

**Ryan Brunt**

**07922 091 459**

**[www.rdbpestcontrol.co.uk](http://www.rdbpestcontrol.co.uk)**

## Why You Should Choose Us

- ✓ Cater for Red Tractor and Farm Assurance Schemes
- ✓ Wide ranging experience on Farms with existing agricultural customers
- ✓ Member of Warwickshire Young Farmers
- ✓ Fully qualified - Level 2 RSPH in Pest Control
- ✓ Trustworthy and security vetted
- ✓ Prompt, reliable fast response

## A selection of sites where I have experience:

Police Sites • Local Airport • Farms • Warehouses • Offices  
• Industrial Estates • Food Premises • Private Houses  
Country Estates • Building Sites • Local Councils • Schools •  
Day Nurseries • Care Homes


## Farm insurance, the way it should be

We're a family-run business and pride ourselves on forging long term relationships with our farming and agricultural clients. Covering the Midlands, South West and South East, we deliver an extensive range of farm, agri business and equine policies tailored to you.

[www.county-insurance.co.uk/farms](http://www.county-insurance.co.uk/farms)

Farm & Equine **01865 844985**

General **01865 842084**

 Follow us @County\_Farm

  
**County**  
Insurance Services

# WE COVER SMALL FARMS, LARGE FARMS AND EVERYTHING IN BETWEEN



From sheep farmers to arable farmers.  
Flower growers to poultry farmers.

NFU Mutual is proud to insure over 75% of UK farms with our Farm Select insurance. But we want more farms to benefit from great cover and local service. NFU Mutual has introduced Farm Essentials insurance - designed to meet the needs of smaller farms.

As your local agency, we are close by and can provide expert advice and hands-on support when you need it.

Call **Coventry Office** on **02476 444519**  
NFU Mutual, 6 Eastwood Business Village,  
Harry Weston Road, Binley Business Park,  
Coventry, CV3 2UB



**NFU Mutual**  
FARM INSURANCE

**FINISHING CATTLE? GROWING CATTLE? FEEDING SHEEP?**

**BERRYSTOCK  
FEEDS**



Do you want **HIGH PERFORMANCE, COST EFFECTIVE, FULLY ASSURED and COMPLETE FEEDS?** Then contact **BERRYSTOCK FEEDS:**

Tel: 01788 890320 E-Mail: [john@berryfieldsfarm.co.uk](mailto:john@berryfieldsfarm.co.uk) Web: [www.berrystockfeeds.co.uk](http://www.berrystockfeeds.co.uk)  
BERRYFIELDS FARM, DAVENTRY, NN11 8NP

## **T.A.R HIRE**

**FOR HIRE:**

- **10 & 14 TON REAR MUCK SPREADERS**
- **12 TON TRAILERS WITH SILAGE SIDES**
- **ROAD SWEEPER**
- **FLAT TRAILERS**
- **GRASS TOPPERS**
- **CONTRACT MUCK SPREADING SERVICES**

**CONTACT:**

**DAVENTRY (ROB) - 07801791212**

**HINCKLEY (ALAN) - 07802951179**



# RFM

**THE MIDLANDS MART**

—RUGBYFARMERSMART.COM—

## **FORTHCOMING SALES**

**Thursday 3rd March- Sale of Store Cattle**

**Vendors who are wishing to sell stock  
please feel free to contact:**

Tom Wrench - 07774 723758

Tim Webster- 07437 101163

who will gladly make

**A FREE ON FARM VISIT & VALUATION**



**Follow us on social media:**

Facebook & Twitter - @RFMMidlandsMart

Instagram - rugbyfarmersmartltd