

R-F-M

THE MIDLANDS MART

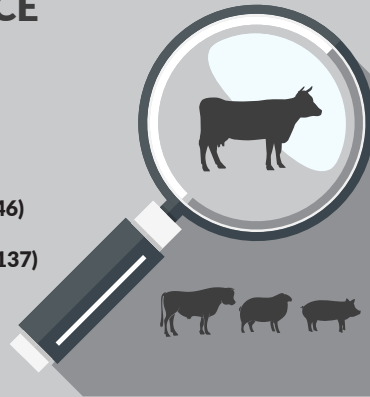
— RUGBYFARMERSMART.COM —

The Charolais Pavilion, Avenue M, Stoneleigh Park,
Kenilworth, Warwickshire CV8 2RG
02476 697731 | www.rugbyfarmersmart.com | 43/139/8013
Office hours: Monday to Friday - 9.00am - 5.00pm
Opening Time: Gates open at 5.30am until further notice

MARKET REPORTS FOR MONDAY 30TH MAY 2022

MARKET AT A GLANCE

Prime Steers to 308p/kg & £2164
Prime Heifers to 309p/kg & £1854
Prime Bulls to 278p/kg & £2024
Cows to 200p/kg & £1780
OTM Cattle to 219p/kg & £1533
OTM Bulls to 164p/kg & £1850
Prime Hogg SQQ 286p/kg (951 Avg £146)
Prime Hogs to 358p/kg & £200
Prime Lamb SQQ 347p/kg (1521 Avg £137)
Prime Lambs to 421p/kg & £172
Ewes to £208 (540 Avg £138)
Calves to £500 (51)



Saturday 4th June
Kenilworth Show

Catalogues & Entry Forms available by post, email or on the website
www.rugbyfarmersmart.com | admin@rugbyfarmersmart.com

CATTLE: 139 FORWARD



Rugby Farmers Mart
Monday 30th May 2022.

Weekly Primestock Sale & Calf Sale saw 3251 head of stock forward consisting of 139 Cattle and 3112 Sheep.

Cattle

31 Steers sold to £2164 or 308ppk
19 Heifers sold to £1854 or 309ppk
16 Young Bulls sold to £2024 or 278ppk.
22 OTM cattle sold to £1849 or 219ppk.

Prime Cattle.

A few less numbers forward with trade a little more variable. The best cattle with shape and style selling beyond expectations. Buyers being slightly choosier the more commercial cattle would be a couple of pence back on the week.

Henry Tustian, Yarnhill Farm set the ring alight with his consignment of nothing but exceptional cattle. Topping the clean section with Pence per Kilo and Pounds per head.

Prime Bulls

Very similar scenario to the clean. Best bulls would certainly be dearer with an impressive bulls from Heart of England selling to £2024. And some sweet handy weight blondes from JHB Hart selling to 278ppk. The black and whites bulls would be slightly less.

OTM cattle .

Ed Hull came up trumps again with his Fed Black Hereford cows up to 219ppk or £1780.

Cows in general would be another fantastic trade. Taking no fault.

Auctioneer: Emma Coupland

Commission Changes

Fat Cattle will still be at 3.5 with a cap of £39 a head for anything up to £2000 anything over this will have a £10 extra charge

Hoggs & Lambs will still be at 3.5% but now have a cap of £4.40

Breeding Cattle, Calves & Store Lambs will remain the same

STEERS & BULLS

Top prices per Head				FA
British Blue	712kg	£2164	J & H Tustian	Y
British Blue	664kg	£2045	Ralph J Tustian	Y
Limousin (Bull)	736kg	£2024	Heart of England Farms	Y
Limousin	774kg	£2012	R H Maycock & Sons	Y
British Blue	654kg	£1988	J & H Tustian	Y

Top prices per Kilo				
British Blue	664kg	308ppk	Ralph J Tustian	Y
British Blue	712kg	304ppk	J & H Tustian	Y
British Blue	654kg	304ppk	J & H Tustian	Y
Limousin	646kg	290ppk	Heart of England Farms	Y
British Blue	596kg	289ppk	ME & CF Williams	Y

HEIFERS

Top prices per head				FA
British Blue	606kg	£1854	Ralph J Tustian	Y
British Blue	580kg	£1792	Ralph J Tustian	Y
British Blue	580kg	£1722	ME & CF Williams	Y
Limousin X	570kg	£1630	F A Osborne	Y
Charolais X	638kg	£1626	R & T Reeve	Y
Top prices per kilo				
British Blue	580kg	309ppk	Ralph J Tustian	Y
British Blue	606kg	306ppk	Ralph J Tustian	Y
British Blue	580kg	297ppk	ME & CF Williams	Y
Limousin X	570kg	286ppk	F A Osborne	Y
British Blue	566kg	264ppk	N J Foster	Y

PLEASE CAN ALL FAT CATTLE VENDORS ENSURE THEY ARE IN THE MARKET BEFORE 9AM THANK YOU!

Len Eadon 1999-2022 Tribute page

<https://leneadon.muchloved.com/?fbclid=IwAR1QM9qsvxqscmyehDUuwJvjrR4KICliDqyezWbDyBEAsDaB164bZn50g4>

COWS

Top prices per head Cows				FA
Angus (Bull)	1128kg	£1849	J & I J Tivey	Y
Limousin X	890g	£1780	D J Hull & Partners	Y
Hereford	894kg	£1662	D J Hull & Partners	Y
Hereford	812kg	£1615	D J Hull & Partners	Y
Top prices per kilo				
Hereford	700kg	219ppk	D J Hull & Partners	Y
Limousin X	890kg	200ppk	D J Hull & Partners	Y
Hereford	812kg	199ppk	D J Hull & Partners	Y
Limousin X	792kg	196ppk	D J Hull & Partners	Y



SHEEP: 3113 FORWARD

PRIME HOGGS: 951

FORWARD SQQ 286P/KG AVG £146

CHARITY HOGG;

In a wonderfully Selfless Act, Robin and Sarah Tombs of New Village Farm, Shabbington decided to donate their first Hogg sold to the Len Eadon Foundation ahead of his Celebration of Life to be held at Stoneleigh this Saturday. The Hogg weighing 63kg sold to Pak Mecca Meats for £209 before being put up to sell twice more at £200 to Mr D Hill, Najibs and D Sandham before selling to kill at £170 to Sandham Trading realising a massive £779 for the Charity. Our Thanks to the wonderful family Tombs for this. We encourage all to attend on Sunday at the Kenilworth Showground for what promises to be a great tribute to Our Friend Len.

Outside of the above moment for reflection Hoggs met a massive trade with varied quality seeming not to dampen demand. Trade simply flying throughout a top of 358p/kg for 46kg from IM Allen Ptnrs with Leam Farming 346, 338 and 334p/kg. Today best meat Hoggs all moving towards 300p/kg throughout. Heavy Hoggs especially wanted today and trade a flyer with pens of heavy Commercial Hoggs hitting the Holy Grail of £200!!! £200 today for 5 Strong Suffolks 74.5kg from J Fyfe & Nephew with P & F Baker down from Lincolnshire to take £195 for 23 Hoggs with Messrs Fyfe 69kg to £186.50. An all in Avg of a massive £146 across the yarding. Hoggs coming towards then end but those risking its longevity getting paid in spades.

Auctioneer: Tom Wrench

PRIME HOGGS : UNDER 45.5kg SQQ 286p/kg

Per Kilo			
Charollais	26.00kg	346ppk	Leam Farm Partnership
Charollais	21.00kg	338ppk	Leam Farm Partnership
Charollais	44.00kg	334ppk	Leam Farm Partnership
Charollais	34.00kg	328ppk	Leam Farm Partnership
Charollais	37.00kg	324ppk	Doody Livestock
Per HEAD			
Charollais	44.00kg	£147.00	Leam Farm Partnership
Charollais	43.00kg	£137.00	Doody Livestock
Charollais	45.00kg	£135.50	T Eadon & Sons
Charollais	44.00kg	£133.00	M & L B Darbishire & Son
Charollais	44.00kg	£133.00	Doody Livestock

PRIME HOGGS : OVER 45.5 kg

Per Kilo			
Suffolk	46.00kg	358ppk	IM Allen & Partners
Cross Bred	63.00kg	332ppk	Len Eadon
Cross Bred	63.00kg	317ppk	Len Eadon
Cross Bred	63.00kg	317ppk	Len Eadon
Texel	49.00kg	316ppk	D Gardiner
Per HEAD			
Cross Bred	63.00kg	£209.00	Len Eadon
Cross Bred	63.00kg	£200.00	Len Eadon
Cross Bred	63.00kg	£200.00	Len Eadon
Suffolk	74.50kg	£200.00	J F Fyfe & Nephew
Charollais	68.50kg	£195.00	P R Baker

The Len Eadon Farming Family Day**5th June 2022, from 11am**

at Kenilworth Showground, Stoneleigh

!THIS SUNDAY!**COMPETITORS - SIGN UP NOW**

- Young Handlers and their dogs
- Sheep Shearing
- Farm Equipment Valuation
- Tug of War
- Metal Fabrication
- Men Bake a Cake for the Jubilee
- Women Make a Posy for the Queen

*A Day of fun, challenges & reflection in
Celebration of Len's Life*

Go to:

leneadon@muchloved.com

For entry details plus much more.

Many thanks to Rugby Livestock Market, Farol John Deere,
Harper Adams University, NFU, Horner Shearing, RIX
Petroleum

SPRING LAMBS: 1521 FORWARD

SQQ 347P/KG AVG £137



An ever growing yard in numbers. Quality seems not to be coming at the rate of last year with the weather seeming to have dictated that the Mule bred Lambs hit the Finish line first. Today a yard of commercial O+ and R Grade lambs met a very fast enquiry with an SQQ of 347p/kg. Those better grading lambs at massive premium today seeing a top of 421p/kg at 38 for Texels from S Wise with Pritchard Farms similar goods 35kg to 399p/kg and S Wise 391p/kg. New Pastures Care Farm showing lambs with bloom selling 34.5kg at 391p/kg. All Lambs over an R Grade today trading into the 380p/kg range. Weight very much in vogue today and trading well at 357p/kg for 46kg from Olivia James with AR & AC Boffey 45kg at 353p/kg and J Slee 47kg to 351p/kg. Hyde Lane Farms 46kg 350p/kg. In the lump Export weights and City Weights in huge demand selling to a top of £160 at 38kg from S Wise with Texels and JEG James 44kg to £156 with J Slee smallest at 43kg to £153.50 equal with R Deacon. All in avg of £137 today with Heavies coming to a real trade topping at £172 for 50kg from DG Coombes and K Attfield with Hyde Lane Farms 50kg to £170 and G Smith 50kg at £169 whilst J Slee 49kg £168. Lambs a real trade with the yarding lacking ability to percent and as a result three buyers attending elsewhere today. Please make sure lambs are fully fit.

Auctioneer: Tom Wrench

SPRING LAMBS : SQQ p/kg

Per Kilo **under 45kg**

Texel	38.00kg	421ppk	S Wise
Texel	35.00kg	399ppk	Pritchard Farms
Texel	35.00kg	391ppk	S Wise
Beltex	34.50kg	391ppk	New Pastures Care Farm
Beltex	32.50kg	389ppk	New Pastures Care Farm

Per HEAD

Texel	38.00kg	£160.00	S Wise
Texel	44.00kg	£156.00	J E G James
Charollais	43.00kg	£151.50	J Slee
Charollais	44.50kg	£153.00	R Deacon
Texel	44.50kg	£152.00	O James

Per Kilo **over 45kg**

Texel	46.00kg	357ppk	O James
Charollais	45.00kg	353ppk	AR & AC Boffey
Charollais	47.00kg	351ppk	J Slee
Beltex	46.00kg	350ppk	Hyde Lane Farms
Charollais	45.00kg	349ppk	G Smith

Per HEAD

Charollais	50.00kg	£172.00	K Attfield
Texel	50.00kg	£172.00	D G Coombes
Beltex	50.00kg	£170.00	Hyde Lane Farms
Charollais	50.00kg	£169.00	G Smith
Charollais	49.00kg	£168.00	J Slee

CULL EWES: 540 FORWARD



Simply put a Small yarding in numbers and Ewe size but an enormous trade. Flying start to finish and a massive avg for half done Ewes at £134. Best end Ewes today easily £200 topping at £208 for a Charollais Ram from J & R Lowe with Charollais Ewes £200 for three separate pens from AD & RM Thomas. Suffolk Rams £199 for J & R Lowe and Charollais Ewes £199 for Messrs Thomas. Most $\frac{3}{4}$ bred or better over £180. Suffolk Ewes to £180 for MJ & CA Greenaway with Messrs Clayton £175 and FJ Tombs £171.50. Suffolks generally £150 plus if weighted. Mules to £160 for a pen of 13 from JP Page & Son with £153.50 from Thomas Gaden and £153 for Hyde Lane Farms. Mules generally around the £130 mark and as dear as we have seen.

Auctioneer: Tom Wrench

EWES

Charollais x	£208	J & R Lowe	Suffolk x	£199	J & R Lowe
Charollais x	£200	AD & RM Thomas	Charollais x	£199	AD & RM Thomas
Charollais x	£200	AD & RM Thomas	X Bred	£195	ND Chantry
Charollais x	£200	AD & RM Thomas	X Bred	£195	J & R Lowe

STORE LAMBS: 194 FORWARD



In this section we sold strong Ewe Hogs £140 to £168, the later being bought by JonJoe Morris.

Also we had a few outfits of Full Mouth Ewes & 8 Lambs @ foot to £65 per life and a Hogg & Lamb to £80 per life.

The rest of the sale was made up of meated Hogs with teeth up which topped at £140 and averaged towards £128.

Auctioneer: Tim Webster

Sunday lairage is now open from 9am-4:30pm
Gates close 4:30pm **STRICTLY.**



CALVES: 51 FORWARD

Today trade was 'on fire' for latest StowAg Show and Sale of Calves with a strong crowd in attendance and in a buying mood.

Though the entry has dropped off from previous week's, with the Spring Calving finished, what we had forward the quality was exceptional

Today's judge Richard Collington picked out George Pountney from Nuneaton and his tremendous Simmental Bull Calf (05/05/22) which realised a staggering £500 and was purchased by Mr G. Scrivens from Shrewley who both receive £25 vouchers from StowAg

The next StowAg Show and Sale will be held on Monday 27th June

The rest of the sale was fast and furious, some of the highlights being Messrs Knaptoft Hall Farms selling Angus Bulls to £410 and Limousin Bulls to £408, also Phil Dyson selling a quality Limousin Heifer to £400.

Simmental Bulls. to £500
Limousin Bulls. £362 to £408
Limousin Hfrs. £315 to £400
Angus Bulls. £132 to £410
Angus Hfrs. £275 to £360
British Blue Bulls. to £390
Hereford Bulls. £130 to £290
Hereford Hfrs. £155 to £240
Blonde Bull. to £150
Longhorn Bull. to £150
Holstein Bulls. £38 to £170

Next Sale 13th June 2022

Please phone entries or for further details contact Tim Webster 07437101163

Auctioneer: Tim Webster

PUPS FOR SALE

2 bitches and 1 dog remaining, have had their first vaccinations and are ready to go from this week.

Good working parents, both work with sheep and cattle.

Call David Goodwin on 07585633901

FOR SALE

Polled Simmental Bulls
19-23 months old
High Health Scheme Herd BVD Tested
& Vaccinated

www.wroxallsimentals.co.uk

Call Rob 07747773815



From animal feed to fencing **WE'VE GOT YOU COVERED**

Based in the heart of the Cotswolds, StowAg is a family run business which has been trading since 1969. We stock over 15,000 products for farmers, agricultural contractors, estate managers and landowners.

We deliver for FREE within 50-miles of our store.



Proudly sponsoring Rugby Farmers Mart 2022

01451 830 400 | stowag.com | sales@stowag.com
StowAg, Moreton Road, Longborough, Glos. GL56 0QJ



EWES & LAMBS

Extra sale added to the calendar for a few farmers wishing to sell their Ewes and Lambs.

Nice little sale and we'll supported by the locals.

Doody Livestock taking the accolade of topping the market again with Cheviot Theaves and Single Lambs at foot sold for £135 per life, also Suffolk Hoggs & Lambs to £115.

Generally trade was decent prices ranging £68 to £86 for doubles and £86 to £104 for singles

WEANLINGS

This section still proves to be popular with sellers and buyers

Today started with Messrs KR Britton & Son from Dereham in Norfolk selling 5mo Hereford Hftrs to £390 and 5mo British Blue Hftrs to £380.

Steph Powell a firm supporter of Rugby sold a 7mo Dairy Shorthorn to £480 and a 7mo Angus Heifer to £400

A new vendor in Messrs EJE & KM Dyer from Towester selling 7mo Limousin x Heifers to £450

And RJ Brendon from Cornwall selling 12/13mo South Devon Steers to £715, 11/12 mo British Blue Hftrs to £585, 11mo Hereford Heifer to £600, 12mo Simmental Heifer to £600 and 11/12mo Limousin Hftrs to £630.

Auctioneer: Tim Webster

STORE CATTLE

A very useful yarding of over 300 forward again and Buyers all around as the grass grows with Cattle travelling afar a field as Ireland. The trade as a synopsis would see Best end and aged Cattle as dear as ever with more Buyers forward. Second string Cattle would see a £50 increase on the week and 3rd rate Cattle for the first time struggling for an audience at all with Grids and feed Cost ruling out those that would perhaps 'chance' such goods in the past. Starting with Bulls a show of dairy sorts on the whole topping at £670 for RJB up from Cornwall with Limousin at 11 months others £660 and Blondes from P & LA Gibbs £600 at 9 months. Into the Stores and a run of 56 from A North & Sons, Lower Quinton the main attraction. This run of 6 - 16 months Cattle having lots of buyer support and returning an avg of £1104. First in a ring a Lim Steer 8 months took £1000 with pens full 7-9 months then following at £965, £910 and £900 and Sisters £925 and £905. Moving up his ages the run topped at £1500 for a pair of Lim Steers 14-15 months of age with 16 month olds to £1440 and 15 months £1415 and £1400 others £1380 and £1300. Sisters in next selling at £1280, £1275, £1265 and £1260 and £1205 a real trade for a real. Next in P Honour up from Thame with Shorthorn Steers to £970 at 10 month - 12months with others £885 and £870 10-13 months. The much awaited consignment from Doody Transport next saw these exceptional Lim and Blue Steers start at £1305 for 11 months and £1010 at 9 months. Blue Heifers then £1100 and £1105 at 9 months with the next in a lovely showey Heifer at 7 months make a whopping £1300 to be shipped to Ireand and eventually find a home on a showyard in France. Then on to P Warden selling Blue Steers £940 12 months. Terry Preston next £1030 for Shorthorn Steers at 10 months with Simmentals £1000. Bucket calves dearer on the week seeing a pen of Angus Steers 15 months at £820. Next 12 mnth old Limousin Heifers to £825 from RJB. Cotswold team out in force today with a good show from Moreton in Marsh and A D Lane selling 13 month old South Devon Steers to £830 and £750. Real strength today 12-14 months from Messrs Vernon Simmental £1110 for Steers and others £1070. Another Cotswold Crusader Manor Farm Partnership saw aged Cattle a real trade at 18 months with Blue Bucket Steers to £1170 and £1130 with sisters £1110 and £1000. Another week from Avon Blue selling Holsteins at 27months to £1080 and others 19 months £960. RJB then a run of real quality saw 13 months at £1200 with others £1120. Sisters 17-18 months then £1125 and £1120, £1100. Last but not least the late entry of Angus from the Execs of B Brickell saw 14 month Angus to £930 and £920 sisters to £800. Late entries from Tom Badger really met the spec required selling 16 month old Buckets to £160 for Angus and Charolais £1145 at 17 months and Blues 19 months £1125 with Blue Sisters 20 months £1105!!!!

Auctioneers Tom Wrench

**On instructions from
Bruce and Victoria Gardner (who are retiring).**

Little Catworth Farm, Little Catworth, Huntingdon, Cambridgeshire, PE28 0PD.

An almost complete farm dispersal sale.

To include: 1986 Ford TW-25 Super Q Cab 4WD Tractor, 1984 Ford TW-25 Q Cab 4WD Tractor,
1977 Muir-Hill 121 Dual Power Tractor, 1982 Massey Ferguson 675 Tractor.

Together with: Grassland & Arable Machinery, Grain & General Purpose Trailers,
Livestock Handling Equipment.

Plus: Agricultural Requisites, Workshop Equipment, Rural Bygones,
Household & Garden Equipment.

Saturday 11th June 2022 at 10.30am.

Vintage & Collectibles Auction.

In Association with the Midsummer Vintage Festival.

Holt Lane, Ashby Magna, Lutterworth, Leicestershire LE17 5NJ.

Comprising: Vintage Tractors, Vehicles, Engines, Farm Equipment and Rural Bygones.

A marquee will be on site for smaller collectibles.

Anticipated entry approximately 800 Lots.

To Be Sold by Auction on Saturday 18th June 2021

For an entry form please contact Gilly on 07921 511852

**Entries are now being accepted for the sale of growing crops & straw in the swath
to be held on Thursday 7th July at Lutterworth Rugby Club.**

**To enter please contact Henry Martin on 01788 564681 or
henry.martin@howkinsandharrison.co.uk.**

TELEPHONE 01788 564666

EMAIL dispersalsales@howkinsandharrison.co.uk

7-11 Albert Street, Rugby, Warwickshire CV21 2RX



ARE YOU FIT FOR FARMING?

MONDAY 21 FEBRUARY

THURSDAY 14 APRIL

MONDAY 13 JUNE

Come and join us in the livestock market café to meet representatives from:

Farming Community Network

Parish Nursing

Vital Massage

Warwickshire Rural Hub



Have a free
shoulder massage
to help relieve
tension

Receive a blood
pressure reading

Talk over any
health concerns
with a nurse
privately

Chat to us
informally in the
café

Receive your free
copy of the FCN
booklets "Fit for
Farming"

Organised by Warwickshire Rural Hub with support from Farming Community Network. Sponsored by:



THE PRINCE'S
COUNTRYSIDE
FUND

FOR SALE

Hyline point of lay hens and growing birds for sale.
Brown egg layers suitable for free range or deep litter.
contact Mark Martin on;
07976 260 775

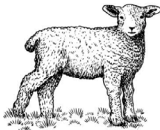
WANTED

Wanted, Watson aerator spiked roll, please contact Richard Ellis on
07973962887

SEE RUGBY FARMERS MART AT

Kenilworth Show

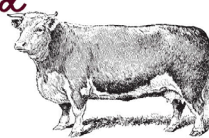
Saturday 4th June



*Come take a bo-peep
at our RFM stand*



*for pimm's, pints and
all things nice!*



Kenilworth show, Stoneleigh Road, Warwickshire, CV8 3AY. Gates open at 9:00am

Hatton Farms Ltd, Hatton, Warwick requires a General Farm Worker for a permanent full-time position to start in September or before.

Progressive arable farming business in Warwickshire with 900 hectares of combinable crops and approx. 200 head of cattle as a finishing enterprise and a small sheep flock.

Ideally the candidate would be someone with a general knowledge and passion for farming but essentially enthusiastic about agriculture. Experience and qualifications using sprayers, rough terrain forklifts and GPS would be advantageous, but full training will be available for the right candidate.

Full clean UK driving licence essential. This is an exciting opportunity offering good career progression with increasing responsibility and continued training. The applicant will be part of a friendly four-person team and will be enthusiastic, clean and have a tidy approach to work and respect for machinery. Competitive salary offered.

Please apply by email to nickym21@gmail.com attaching your CV.

WE COVER SMALL FARMS, LARGE FARMS AND EVERYTHING IN BETWEEN



From sheep farmers to arable farmers.
Flower growers to poultry farmers.

NFU Mutual is proud to insure over 75% of UK farms with our Farm Select insurance. But we want more farms to benefit from great cover and local service. NFU Mutual has introduced Farm Essentials insurance - designed to meet the needs of smaller farms.

As your local agency, we are close by and can provide expert advice and hands-on support when you need it.

Call **Coventry Office** on **02476 444519**
NFU Mutual, 6 Eastwood Business Village,
Harry Weston Road, Binley Business Park,
Coventry, CV3 2UB



NFU Mutual
FARM INSURANCE

Farm insurance, the way it should be

We're a family-run business and pride ourselves on forging long term relationships with our farming and agricultural clients. Covering the Midlands, South West and South East, we deliver an extensive range of farm, agri business and equine policies tailored to you.

www.county-insurance.co.uk/farms

Farm & Equine **01865 844985**

General **01865 842084**

Follow us @County_Farm



Independent Insurance Brokers County Insurance Services Limited. Address and Registered Office: County House, Glyme Court, Langford Lane, Kidlington, Oxon OX5 1LQ. Authorised and regulated by the Financial Conduct Authority (FCA) (FRN: 597267). Company registered in England No. 08411634

FINISHING CATTLE? GROWING CATTLE? FEEDING SHEEP? **BERRYSTOCK FEEDS**

Do you want **HIGH PERFORMANCE, COST EFFECTIVE, FULLY ASSURED and COMPLETE FEEDS?** Then contact **BERRYSTOCK FEEDS:**

Tel: 01788 890320 E-Mail: john@berrystockfeeds.co.uk Web: www.berrystockfeeds.co.uk
BERRYFIELDS FARM, DAVENTRY, NN11 8NP

The advertisement features a central image of sheep on the left and cows on the right, both in a farm setting. The text is overlaid on a dark background with a red diamond shape containing the company name.

T.A.R HIRE

FOR HIRE:

10 & 14 TON REAR MUCK SPREADERS

12 TON TRAILERS WITH SILAGE SIDES

ROAD SWEEPER

FLAT TRAILERS

GRASS TOPPERS

CONTRACT MUCK

SPREADING SERVICES

CONTACT:

DAVENTRY (ROB) - 07801791212

HINCKLEY (ALAN) - 07802951179



RFM

THE MIDLANDS MART

RUGBYFARMERSMART.COM

FORTHCOMING SALES

Saturday 4th June

Kenilworth Show

**Vendors who are wishing to sell stock
please feel free to contact:**

Tom Wrench - 07774 723758

Tim Webster- 07437 101163

who will gladly make

A FREE ON FARM VISIT & VALUATION



Follow us on social media:

Facebook & Twitter - @RFMMidlandsMart

Instagram - rugbyfarmersmartltd