

# RUGBY PRIMESTOCK SOCIETY

## 49th

### CHRISTMAS SHOW AND SALE

# SHOW CATALOGUE

MAIN SPONSOR:

**HUNT'S**

**Genuine parts.  
Genuine performance.**





**18 MONTHS\* WARRANTY**  
(See dealer for details)

**Kubota Parts and Service**  
*Reliability > for the Job Ahead*

f t i n www.kubota.co.uk

**Agricultural & Groundcare Sales, Service & Parts**

**Tel 01608 638407**  
Out of hours contact: 07812 246494

Opening Times:  
Mon to Friday 8.00am to 5.00pm  
Saturday 8.00am to 1.00pm  
Closed - Sunday



## MONDAY 28th November 2022

To be held at  
Rugby Farmers Mart, Stoneleigh Park

**Rugby Primestock Society  
49<sup>th</sup> Christmas Show & Sale  
Monday 28<sup>th</sup> November 2022**

<b>8.00am</b>	<b>Show sheep to be weighed and penned</b>
<b>8:15am</b>	<b>Show cattle – classes 1-6 must be weighed by</b>
<b>10:15am</b>	<b>Sale of commercial lambs</b>
<b>10:00am</b>	<b>Judging – show cattle</b>
<b>10:00am</b>	<b>Home baking and butchers entries to have arrived</b>
<b>10:30am</b>	<b>Produce to have arrived</b>
<b>11am</b>	<b>Judging - home baking, butchers classes and produce</b>
<b>12:00pm not before</b>	<b>Sale of show sheep Supreme Champion, Reserve Supreme Champion, YFC winner sold through sheep ring To be followed by all show sheep in pen order (including ewes)</b>
<b>1pm not before</b>	<b>Sale of Show cattle Beginning with champion cake and pork pie followed by: Cattle Supreme Champion, Reserve Supreme Champion &amp; YFC followed by the show cattle in lot order Charity sale of produce to include fruit cakes and pork pies followed by commercial cattle</b>
<b>1:00pm approx</b>	<b>Sale of store lambs</b>
<b>2:30pm</b>	<b>Selling ewes</b>

# **Rugby Primestock Society**

## **49th**

### **Christmas Show & Sale**

**Chairlady:** Miss R Leach

**Vice Chairlady:** Miss S Taylor

**Hon. Secretary:** Miss H McCurdie

**Hon. Treasurer:** Ms E Greig

#### **Committee**

J Bausor, J L Davies, F Page, R Ellis, A Fyfe, J Hall, R Laban,  
S Gowling, B Smith, M Stevens, D S Wadland, T Wrench,  
G Young, S Eales, Mrs A Tarry-Smith, M Neal, S Baker

#### **Vendors exhibiting Show Stock in Classes :** **1 - 6 (Cattle) and 14 - 25 (Sheep)**

**Please be reminded that weighing times are as follows:**

**All Show Sheep: 5:30 a.m. to 8:00am**

*Show sheep to be unloaded at specifically identified show dock.*

*Your patience is appreciated on this busy show morning.*

**and**

**Show Cattle - Classes 1-6 only: 8:15am to be weighed.**

*All other Show Cattle to be unloaded by 9:00am*

Cattle Passports must be handed in at the time of arrival together with a completed and signed Market FCI.

Please note: Judging will begin promptly and any stock arriving late to the market will not be allowed entry into classes.

If entrants are delayed for a genuine reason contact the Secretary as soon as possible on the morning of the show. 07899 916332

### **CATTLE CLASSES**

All Cattle to arrive before 9.00a.m

Judging time: 10:00am

Judge: Mr Kevin Kelly

Classes 1-13 plus Special Classes

Sale Time: 1:00pm (not before)

### **SHEEP CLASSES**

All Sheep to be weighed by 8:00a.m

Judge: Mr Saj Shan

Classes 14-25 plus Special breed classes

Sale Time: 12:00pm (not before)

### **PRODUCE CLASSES**

All Produce to arrive before 10:30am

Judging time 11am

Judge: Mr Mark Ellard

Classes P1-P13

Sale Time: 1:45pm

### **HOME BAKING: BEST FRUIT CAKE**

All Cakes to arrive before 10:00am

Judging time 11am

Judge: Mrs Hilary Neal

Class A

### **HOME BAKING: BEST MINCE PIES**

All Mince Pies to arrive before 10:00am

Judging time 11am

Judge: Mrs Hilary Neal

Class B

### **BUTCHERS CLASSES**

All entries to arrive before 10.00am

Judging time 11am

Judge: Mr T Webster

Classes C, D & E



## **Message from the Chairlady**

**Good morning to you all and welcome to the 49th Rugby  
Primestock Society Show and Sale.**

**We are excited to have you all back this year with new  
sponsors and trophies. Also the first small Christmas market  
that will hopefully grow each year with the support of you all,  
our important Rugby Market vendors!**

**Thank you to my father, Robert Leach, for donating the pig for  
today's hog roast. Also thanks to all of our much appreciated  
sponsors and all the help we receive on the day, to make the ever  
growing classes a success!**

**This year, I have chosen two charities very close to everyone's  
hearts. First one being FCN in memory of Leonard Eadon, a  
much loved local young farmer whose parents regularly support  
Rugby Market. My second chosen charity for this year is  
Lymphoma Action as our beloved Sophie Mockler  
successfully kicked its butt this year. We will be supporting the  
charities through the raffle sale, hog roast, and sale of the home  
baking and produce including a decorated Christmas cake!**

**Please don't forget about this year's Primestock dinner at  
Kenilworth Golf Club. Everyone is welcome!**

**Good luck to all the competitors and have an enjoyable day.**

**Rosie Leach  
Chairlady 2022**

# CATTLE CLASSES

**Judge: Mr Kevin Kelly**

Judging to commence at approx 10:00am

## **CLASS 1: STEER - Halter Led (Lightweight)**

Competing for the Meade Clarke Silver Perpetual Challenge Trophy

Prize Money: 1st £50 2nd £40 3rd £30

Kindly Sponsored by:



## **CLASS 2: STEER - Halter Led (Medium weight)**

Competing for the Denzil Thomas Silver Perpetual Challenge Trophy

Prize Money: 1st £50 2nd £40 3rd £30

Kindly Sponsored by:



## **Manor Farm Feeds**

Manufacturer and Retailer of High Quality Feeds

High Quality Calf, Cattle, and Sheep Blends and Coarse mixes

Custom made Speciality Blends and Coarse Mixes

Suppliers to many Pedigree Breeders

Horse Feeds and Bedding

Pig Poultry and Pet Feeds

**MANOR FARM FEEDS (Owston) LTD  
GREEN LANE, OWSTON, OAKHAM, LEICESTERSHIRE  
LE15 8DX**

**TEL 01664 454256 FAX 01664 454561  
E.MAIL: sales@manorfarmfeeds.co.uk**

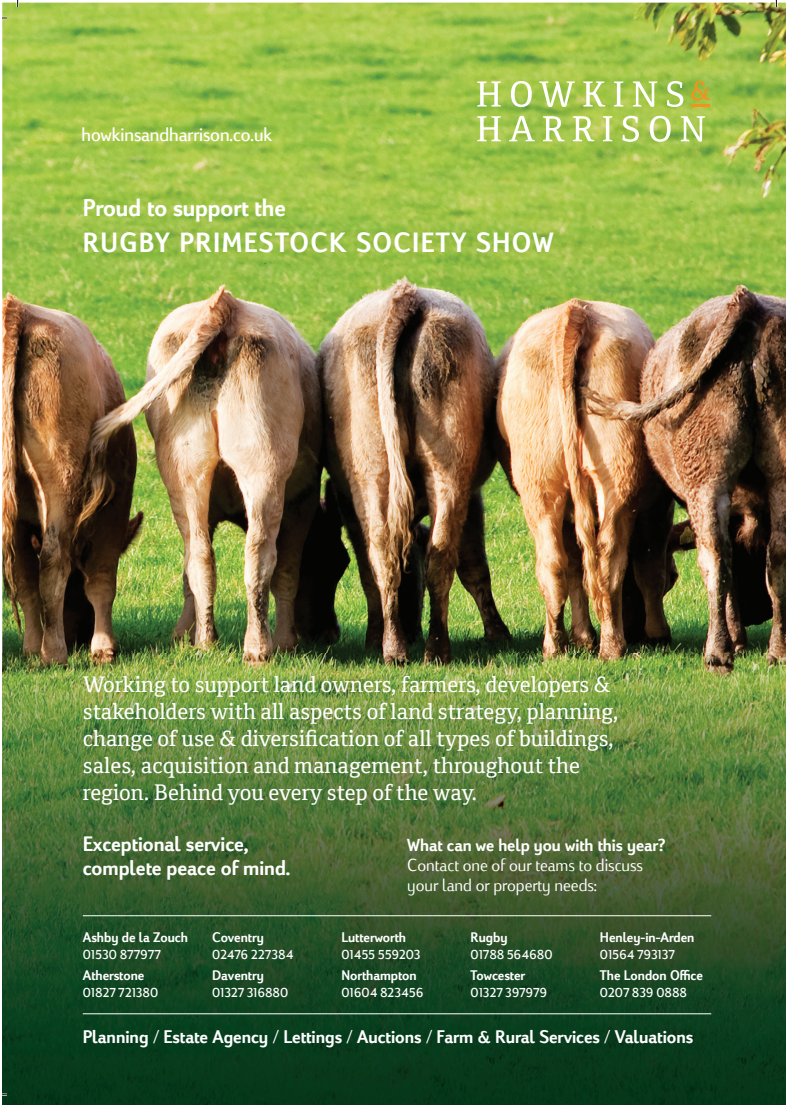
Equal division of Steer entries in upto 3 classes when weighed. This will be adjudicated by the appointed show steward, whose decision shall be final.

### **CLASS 3: STEER - Halter Led (Heavyweight)**

Competing for the John Bausor Silver Perpetual Challenge Trophy

Prize Money: 1st £50 2nd £40 3rd £30

Kindly Sponsored by:



howkinsandharrison.co.uk

**HOWKINS &  
HARRISON**

Proud to support the  
**RUGBY PRIMESTOCK SOCIETY SHOW**

Working to support land owners, farmers, developers & stakeholders with all aspects of land strategy, planning, change of use & diversification of all types of buildings, sales, acquisition and management, throughout the region. Behind you every step of the way.

**Exceptional service,  
complete peace of mind.**

What can we help you with this year?  
Contact one of our teams to discuss  
your land or property needs:

Ashby de la Zouch 01530 877977	Coventry 02476 227384	Lutterworth 01455 559203	Rugby 01788 564680	Henley-in-Arden 01564 793137
Atherstone 01827 721380	Daventry 01327 316880	Northampton 01604 823456	Towcester 01327 397979	The London Office 0207 839 0888

**Planning / Estate Agency / Lettings / Auctions / Farm & Rural Services / Valuations**

### **Entries**

**001DN Burbidge Farms**

**002 R Geary**

**005 D Pledsted**

**006 P Jarrom 005 GR Fountaine & Sons**

**006 F Page 007 F Page**

**CLASS 4: Heifer - Halter Led (Lightweight)**

Competing for the Langley Clarke Silver Perpetual Challenge Trophy

Prize Money: 1st £50 2nd £40 3rd £30

Kindly Sponsored by:

**HARRIS & CLARKE**  
**CHARTERED ACCOUNTANTS**

...Specialising in Agriculture ...

**Straightforward Professional advice**

**For further information or a free no  
obligation meeting please contact:**

**John Harris ACA,  
Helen Cara ICSA or Paul Osborn ACA**

7 Billing Road, Northampton, NN1 5AN  
Oak House Farm, Braybrooke, LE16 8LH  
[www.harrisandclarke.co.uk](http://www.harrisandclarke.co.uk)  
Telephone 01604 622274

**CLASS 5: Heifer - Halter Led (Heavyweight)**

Competing for the Jack Roberts Silver Perpetual Challenge Trophy

Prize Money: 1st £50 2nd £40 3rd £30

Kindly Sponsored by:

**Eternit fibre  
cement**  
sheets and fittings  
**02476 650 555**  
**CLADDEX**  
**www.claddex.co.uk**  
e: sales@claddex.co.uk  
**BEST PRICES**

Equal division of Heifer entries into 3 classes when weighed. This will be adjudicated by the appointed show steward, whose decision shall be final.



**CLASS 6: Heifer - Halter Led (Heavyweight)**

Competing for the Rugby Master Butchers Silver Perpetual Trophy

Prize Money: 1st £50 2nd £40 3rd £30

Kindly Sponsored by:

# Christmas Gifts

*from Aubrey Allen*



We've put together a selection of our most popular Aubrey Allen gifts for you to peruse, reserve and pay for online.

- The Aubrey Allen Experience gift card
- Oscar's French Steakhouse & Bistro dining card
- Butchery School voucher
- Cheese Hampers

Visit [www.aubreyallenleamington.co.uk/gift-shop](http://www.aubreyallenleamington.co.uk/gift-shop)  
or scan the QR code



@aubreyallendeli



@AubreyDeli



**Entries**

008 G R Fountaine & Son  
011 F Page

009 P Jarrom  
012 RW & HER Trivett

010 F Page

**CLASS 7: NATIVE BREED- Halter Led**

Competing for the Stephen Timms Silver Perpetual Challenge Trophy

Prize Money: 1st £50 2nd £40 3rd £30

Kindly Sponsored by:



**FOR ALL YOUR FARM VET NEEDS,  
WE ARE HERE FOR YOU, WE ARE HNVG.**

The farm department has grown over the last 30 years and now consists of 8 dedicated farm-only vets and 3 TB testing vets.

Each vet has their own areas of special interest and knowledge, and are all encouraged to push for prevention rather than cure.

Two of our TB testing vets are now official TB advisors and can be booked for FREE on-farm visits to discuss biosecurity, cattle trading and housing.



**HOOK NORTON 01608 730085**

**White Hills Surgery, Sibford Road, Hook Norton, OX15 5DG**

**24-HOUR EMERGENCY SERVICE | [WWW.HOOKNORTONVETS.CO.UK](http://WWW.HOOKNORTONVETS.CO.UK)**

**Entries**

**013 P Jarrom**

**CLASS 8: YOUNG FARMER- Halter Led**

Competing for the Rugby Livestock Sales Ltd Silver Perpetual Challenge

Prize Money: 1st £100 2nd £80 3rd £60

Kindly Sponsored by:

Berryfields Farm

**BERRYSTOCK  
FEEDS**



**PROVIDING CATTLE  
AND SHEEP FEEDS FOR  
THE MODERN MARKET**



**Do You Want?**

- HIGH PERFORMANCE
- COST EFFECTIVE
- FULLY ASSURED
- COMPLETE FEEDS
- INTEGRATED FEEDING SYSTEMS

Then contact **BERRYSTOCK FEEDS:**

Tel: 01788 890320 E-Mail: [admin@berryfieldsfarm.co.uk](mailto:admin@berryfieldsfarm.co.uk)

Web: [www.berrystockfeeds.co.uk](http://www.berrystockfeeds.co.uk)

UFAS 350

**DO IT THE BERRYSTOCK WAY**

**Entries**

014 Charlie Jarrom 015 Josh Geary 016 George Page



## CLASS 9: STEER OR HEIFER - Halter Tied

Competing for the Lennon Bros Silver Perpetual Challenge Trophy

Prize Money: 1st £40 2nd £30 3rd £20

Kindly Sponsored by:

**Kiwikit ROXAN**

## Proud Sponsors

of this year's Rugby Primestock Show

Switch & Upgrade to a comprehensive range of tags that stay in, styles and colours or additional print info that can be useful to you.

Get in touch with Kelsey who is Santa's little helper for all things tags and even a few festive gift ideas people will want! - don't go all Ebenezer...

- ❄️ **PREMIUM WATERPROOFS**
- ❄️ **KIDS CLOTHING**
- ❄️ **EID READERS**
- ❄️ **STOCKING FILLERS**
- ❄️ **WELLIES & BOOTS**
- ❄️ **SKINCARE**
- ❄️ **GIFT VOUCHERS!**

**FREE  
REPLACEMENTS  
WITH FREE  
POSTAGE!**

**TRUSTED  
RETENTION**

**HIGH  
WELFARE**

**KELSEY WILLIAMSON**

T: 07951 969 087

E: [kelsey.williamson@datamars.com](mailto:kelsey.williamson@datamars.com)

**Kiwikit ROXAN**

## Entries

017 - 019 DN Burbidge Farms  
021 J Gilbert

020 GR Fountiane & Son  
022 F Page

**CLASS 10: PAIR OF STEERS OR HEIFERS - Halter Tied**

Competing for the Geoff Towers Silver Perpetual Challenge Trophy

Prize Money: 1st £40 2nd £30 3rd £20

Kindly Sponsored by:



**SHORT OF STORAGE SPACE?**

**BOWIE LOCKWOOD**  
02476 459000  
sales@bowielockwood.co.uk

Competitive prices for all your agricultural & industrial requirements  
**CONTACT US NOW!**

CE FMB HAS RIDBA

**Entries**

023/024 DN Burbidge Farms

024/025 J Gilbert

**CLASS 11: REGULAR VENDOR - Halter Tied**

Competing for the Primestock Tankard

Exhibitor to have sold cattle at Rugby Farmers Mart 5 times or more during the last 12 months

Prize Money: 1st £40 2nd £30 3rd £20

Kindly Sponsored by:



**KIT BUILDINGS**

LIVESTOCK BUILDINGS

CROP STORAGE

DAIRY BUILDINGS

GENERAL PURPOSE

sales@kitbuildings.co.uk

02476 659 767

**Entries**

026 GR Fountaine & Son

027 Jane Gilbert

028 F Page

029 RW & HER Trivett

**CLASS 12: BULL- Halter Tied**

Competing for the National Westminster Bank Plc Silver Perpetual Challenge  
Trophy

Prize Money: 1st £40 2nd £30 3rd £20



**CHAROLAIS**  
THE BRITISH CHAROLAIS CATTLE SOCIETY

Get connected  
f  
i  
t

DoM  
18 JUL

**No bull works harder  
for the farmer,  
the plate  
and the planet**

To find out more visit our website  
[www.charolais.co.uk](http://www.charolais.co.uk)

Tel: +44 (0)2476 697222 Email: [charolais@charolais.co.uk](mailto:charolais@charolais.co.uk)

**Entries**

030 DN Burbidge Farms  
033 L Stimson

031 CH Evans & Son

032 CH Evans & Son

**CLASS 13: BARREN COW- Halter Tied**

Competing for the Mr & Mrs F W Baker Silver Perpetual Challenge Trophy

Prize Money: 1st £40 2nd £30 3rd £20

Kindly Sponsored by:



**Ellacotts**  
Chartered Accountants & Business Advisers

[www.ellacotts.co.uk](http://www.ellacotts.co.uk)

**KEEPING YOU  
AHEAD OF  
THE HERD**



**Contact us for a free initial consultation**

Our staff are from farming backgrounds and understand the challenges and opportunities that face the farming industry. We work with a wide range of farmers, landowners and other argibusinessess to provide individually tailored taxation and accounting services including:

- Succession planning advice
- Accounts and tax return preparation
- Property and land transaction planning
- New venture or diversification
- VAT and bookkeeping

**Mark Dickin**  
[mdickin@ellacotts.co.uk](mailto:mdickin@ellacotts.co.uk)

**Kerry O'Reilly**  
[koreilley@ellacotts.co.uk](mailto:koreilley@ellacotts.co.uk)

**Claire Rigby**  
[crigby@ellacotts.co.uk](mailto:crigby@ellacotts.co.uk)

Banbury - 01295 250401 | Kettering - 01536 646000 | London - 0203 693 7315

**Entries**

**034 AA Fyfe & Son  
037 P Jarrom**

**035 Inkerman Charolais 036 Inkerman Charolais  
038 F Page 0039 RW & HER Trivett**

## **CATTLE CLASSES - SPECIAL PRIZES**

### **Champion Home Bred, Fed & Halter Led Steer or Heifer**

Competing for the John Page Silver Perpetual Challenge Trophy

Prize money £100

Kindly Sponsored by:



### **Page Bros**

**Leading Producers of  
Show Potential Suckled Calves**

**&**

**Pedigree Limousin & British Blue Bulls**

### **Heaviest Steer In Rugby Market On Show day**

Competing for the Brian & Angela Tarry-Smith Silver Perpetual Challenge  
Trophy

Prize money £50

Kindly Sponsored by:

**Mrs Angela Tarry-Smith  
In Loving Memory of Josh Tarry**





**Purchaser of the Supreme Champion Beast**

Competing for the Jack Ayres Silver Perpetual Challenge Trophy

Prize money £50

Kindly Sponsored by:

**MID ENGLAND AGRICULTURE LTD**

GRAIN SPECIALISTS & AGRICULTURAL MERCHANTS

Hopyard Farm, Lubbethorpe, Enderby, Leicester, LE19 4AZ

**SUPPORT YOUR LOCAL GRAIN SPECIALISTS &  
AGRICULTURAL MERCHANTS.**

We will guarantee you:-

An up-to-the-minute market report & price.

A friendly and efficient service

Peace of mind where payments are concerned -

We are covered by Bad Debt Insurance.

PHONE NOW for all

grains, oilseeds, and pulses prices:-



**IAN ROOT - 0116 2630208**



**Opposite Sex Beast to the Supreme Champion**

Competing for the Rugby Fatstock Silver Perpetual Challenge Trophy

Prize money £50

Kindly Sponsored by:



**PROUD  
SPONSORS**

**mole**  
Country Stores

 **Committed to  
UK AGRICULTURE**

**moleonline.com**

## Supreme Champion Beast in The Show

Competing for the Rugby Advertiser Silver Perpetual Challenge Trophy

Prize money £150

Kindly Sponsored by:



**Genuine  
parts.  
Genuine  
performance.**



**Kubota Parts and Service**  
**Reliability > for the Job Ahead**

    [www.kubota.co.uk](http://www.kubota.co.uk)

## **Agricultural & Ground**

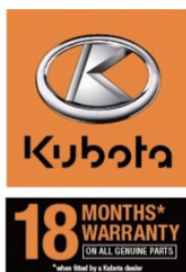


**Tel**  
Out of hours

Op  
Mon to Frid  
Saturday  
Clo



# HUNT'S



**Full Care Sales, Service & Parts**

**01608 638407**

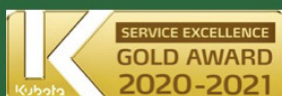
contact: 07812 246494

Opening Times:

Monday 8.00am to 5.00pm

Tuesday 8.00am to 1.00pm

Closed - Sunday



**Reserve Supreme Champion Beast in The Show**

Competing for the Darlaston & Wright Silver Perpetual Challenge Trophy

Prize money £50

Kindly Sponsored by:



**Genuine  
parts.  
Genuine  
performance.**



**Kubota Parts and Service**  
**Reliability > for the Job Ahead**

   [www.kubota.co.uk](http://www.kubota.co.uk)

***Agricultural & Groundcare Sales, Service & Parts***

**Tel 01608 638407**

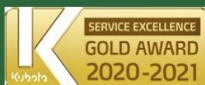
Out of hours contact: 07812 246494

Opening Times:

Mon to Friday 8.00am to 5.00pm

Saturday 8.00am to 1.00pm

Closed - Sunday





## SHEEP CLASSES

Judge: Mr Saj Shan

*Please note: Show sheep to unload in the designated dock only*

### CLASS 14: PEN OF 3 LAMBS - BELTEX / TEXEL SIRE (Lightweight)

Maximum weight 131kgs

Competing for The Eric Elliot Silver Perpetual Challenge Trophy

Prize Money: 1st £40 2nd £30 3rd £20 4th £10

Kindly Sponsored by:

**OLIVER**  
LANDPOWER

200 Years and Still Growing  
Sales • Parts • Service

Oliver Landpower are established Agricultural, Groundcare,  
Commercial Vehicle & Nugent Trailer Specialists.

**JCB** **KUHN** **SUMO**

Stratford Tel: 01789 720265  
Tingewick Tel: 01280 848494  
Kings Langley Tel: 01923 265211  
Luton Tel: 01582 727111  
Colchester Tel: 01206 581126

www.oliverlandpower.co.uk @OliverLandpower

### Entries

- |                   |                        |                       |
|-------------------|------------------------|-----------------------|
| 1. P Batchelor    | 2&3. AEJ & FJ Claridge | 4. GR Fountaine & Son |
| 5. K Gray         | 6&7. DW Gurney & Son   | 8. R Laban            |
| 9&10. T Cockerill | 11. R Richins          |                       |



**CLASS 15: PEN OF 3 LAMBS - BELTEX / TEXEL SIRE (Heavyweight)**

**Minimum weight 132kgs**

Competing for The Eric Elliot Silver Perpetual Challenge Trophy

Prize Money: 1st £40 2nd £30 3rd £20 4th £10

Kindly Sponsored by:



You wouldn't take a  
chance with your farm...

...so why take a risk with your  
choice of Land Agent?

Godfrey-Payton Chartered Surveyors - Land Agents *ahead of the field*

t : 01926 492511  
e: info@godfrey-payton.co.uk  
www.godfrey-payton.co.uk

**gp**

**GODFREY-PAYTON**  
CHARTERED SURVEYORS

Offices at: Warwick, Coventry & Market Harborough

**Entries**

1&2. P Batchelor  
6. GR Fountaine & Son  
9. T Cockerill  
11. DJ & BJ Leadbeater

3-5. AEJ & FJ Claridge  
7&8. DW Gurney & Son  
10. R Laban  
12. T Reeve      13. R Richins

**CLASS 16: PEN OF 3 LAMBS - ANY OTHER CONTINENTAL SIRE**

Competing for The Eric Elliot Silver Perpetual Challenge Trophy

Prize Money: 1st £40 2nd £30 3rd £20 4th £10

Kindly Sponsored by:

**Southam Agricultural Services**  
**www.southamagri.co.uk 01926 813426**

**FIELDS FARM, SOUTHAM CV47 2DH**

**Email: [sales@southamagri.co.uk](mailto:sales@southamagri.co.uk)**



**Main Agents for Kawasaki, Kuhn, Teagle,  
Stiga, Kidd, Twose, Oxdale and Mountfield**

**Most makes of machinery supplied and serviced**

**New and second-hand farm machinery,  
ATVs and groundcare machinery available**



**Entries**

**1. DW Gurney & Son**

**2. DW Gurney & Son**

**3. Poulson & Co**

**CLASS 17: PEN OF 3 LAMBS - TRIMMED (Lightweight)**

**Any Breed - Maximum Weight 131kgs**

Competing for the Fred Starkey Silver Perpetual Challenge Trophy

Prize Money: 1st £40 2nd £30 3rd £20 4th £10

Kindly Sponsored by:



**Rix OAKLEYS**  
PART OF THE RIX FAMILY

Proud to support the  
**Rugby Farmers Market**

Gas Oil & Gas Oil+ Diesel & Unleaded Lubricants & Additives Fuel Tanks

Call for a quote on: **01675 437 557** | [www.rix.co.uk](http://www.rix.co.uk) | [midlands@rix.co.uk](mailto:midlands@rix.co.uk)

**Entries**

**1. P Batchelor**

**2. A Geary**

**CLASS 18: PEN OF 3 LAMBS - TRIMMED (Heavyweight)**

**Any Breed - Minimum Weight 132kgs**

Competing for

Prize Money: 1st £40 2nd £30 3rd £20 4th £10

Kindly Sponsored by:

**PETER G SMITH**

**Soil Nutrient Systems Ltd**

- Ag-lime
- Fertiliser
- Sand
- Seaweed
- Basic Slag

**Tel: 07710 145445**



**Black Hales Farm, Birmingham Road, Kenilworth, CV8 1PT**

**Entries**

**1. P Batchelor**

**2. A Geary**



**CLASS 19: PEN OF 3 LAMBS - NATIVE SIRE (Lightweight)**

**Maximum weight 131kgs**

Competing for the Dennis Clarke Silver Perpetual Challenge Trophy

Prize Money: 1st £40 2nd £30 3rd £20 4th £10

Kindly Sponsored by:



**NEW!**  
EXTENDED  
CLOTHING  
& FOOTWEAR  
RANGE  
LOCATED ON THE  
FIRST FLOOR



**EXTENSIVE  
RANGE  
EQUESTRIAN  
PET  
SMALL ANIMAL  
AGRICULTURAL  
WILD BIRD  
CAGED BIRD  
EQUESTRIAN WEAR  
COUNTRY WEAR  
FOOTWEAR  
GIFTS**

SUPPLYING FEED AND ACCESSORIES  
FOR FARM ANIMALS | EQUINE |  
POULTRY AND SMALLHOLDER | WILD  
AND CAGED BIRDS | FISH - ALSO  
AVAILABLE- GARDENING SUPPLIES |  
LAND MANAGEMENT | PEST CONTROL

ROCKINGHAM ROAD MARKET  
HARBOROUGH O1858 461463

IN STORE | MAIL ORDER | DELIVERY | CLICK & COLLECT  
[WWW.WELLANDVALLEYFEEDS.CO.UK](http://WWW.WELLANDVALLEYFEEDS.CO.UK)

**Entries**

1. GR Fountaine & Son

2. DW Gurney & Son

3. GB Tarry

4&5. TC Williams & Sons

6. MJ Woodward

**CLASS 20: PEN OF 3 LAMBS - NATIVE SIRE (Heavyweight)**

**Minimum weight 132kgs**

Competing for the Dennis Clarke Silver Perpetual Challenge Trophy

Prize Money: 1st £40 2nd £30 3rd £20 4th £10

Kindly Sponsored by:

**FAROL**



**JOHN DEERE**

Farol Ltd are proud to support the  
**Rugby Primestock Society**



Agricultural, construction, golf, and garden machinery  
Servicing, parts, tyre sales and repairs

*Serving customers in Central & Southern England*

Wharf Farm, Coventry Road, Hinckley, Leicestershire, LE10 0NB



sales@farol.co.uk



01455 638960



www.farol.co.uk

**Entries**

1. P & LA Gibbs

2&3. DW Gurney & Son

4. GB Tarry

5&6. TC Williams & Sons

7. MJ Woodward

## CLASS 21: PEN OF 3 LAMBS EXHIBITED BY A YOUNG FARMER

### Any breed

Competing for The Leonard Eadon Perpetual Trophy

Prize Money: 1st £80 2nd £60 3rd £40 4th £20

Winner also to receive a hamper kindly donated by David and Cindy Simpson

Kindly Sponsored by:

## WE COVER SMALL FARMS, LARGE FARMS AND EVERYTHING IN BETWEEN



As the UK's leading rural insurer, we're here to put your mind at ease. Whatever cover you choose from us, you can be sure of a high level of protection.

To see how our policies and services can benefit your farming business, search 'NFU Mutual Farming' or contact NFU Mutual Central Warwickshire

5B, Tournament Court, Edgehill Drive, Warwick, CV34 6LG | 02476 418 373



**NFU Mutual**  
FARM INSURANCE

ames, A Price, M Welton, J Bird & G Wheatley is an appointed representative of The National Farmers Union Mutual Insurance Society Limited (No. 1982). Registered in England. Registered Office: Tiddington Road, Stratford-upon-Avon, Warwickshire CV37 7BL. Authorised by the Prudential Regulation Authority and regulated by the Financial Conduct Authority and the Prudential Regulation Authority. A Member of the Association of British Insurers.

r security and training purposes calls may be recorded and monitored.

### Entries

1. Florence Claridge 2&3. Tom Cockerill 4. Zoe Collett 5. J & R Geary  
6. Grace Morris 7. Zara Morris 8. Alice Barnwell 9. Ed Ringer  
10. Guy Shepherd 11. Sophie Shepherd 12. Sophie Taylor 13. Millie  
Taylor

### CLASS 22: PEN OF 3 LAMBS - NOVICE

**Any breed - exhibitor not having won a 1st prize in the previous 3 years.**

Competing for the DS & LE Wadland Silver Perpetual Challenge Trophy

Prize Money: 1st £40 2nd £30 3rd £20 4th £10

Kindly Sponsored by:



#### Entries

1. A Geary  
5&6. R Woodward

2&3. T Cockerill

4. DW Gurney

### CLASS 23: PEN OF 3 LAMBS - REGULAR VENDOR

**Any breed**

Competing for the Primestock Tankard

Prize Money: 1st £40 2nd £30 3rd £20 4th £10

Kindly Sponsored by:



#### Entries

1. P Batchelor  
3&4. DW Gurney & Son  
6. R Richins

2. AEJ & FJ Claridge  
5. GR Fountaine & Son  
7&8. TC Williams and Son

**CLASS 24: PEN OF 3 CULL EWES - CONTINENTAL**

Competing for the Ben Vernon Silver Perpetual Challenge Trophy

Prize Money: 1st £40 2nd £30 3rd £20 4th £10

Kindly Sponsored by:

**RURAL BUILDING SUPPLIES LTD**

Brookside Farm  
Lutterworth Road  
Arnesby  
Leicester LE8 5UT

S. MASON

01162 799092

**Entries**

1. R Laban

2. DJ & BJ Leadbeater

3. A Pittom

**CLASS 25: PEN OF 3 CULL EWES - NATIVE**

Competing for the Ben Vernon Silver Perpetual Challenge Trophy

Prize Money: 1st £40 2nd £30 3rd £20 4th £10

Kindly Sponsored by:

**GET MORE WOOL  
FOR YOUR**

Contact your nearest depot and  
see why thousands of farmers  
are choosing a better service,  
faster payment and consistently  
higher prices.

● Peatling Magna  
Brookhill Farm, Steve Eales 07732-213278



**Laurence Pierce  
(Wool Merchants)**



Office: 0371-2184218  
Web: [www.wool.ie](http://www.wool.ie)

**Entries**

1. P & LA

Gibbs

2. A Pittom

3. R Laban

4. S Leedham



## SPECIAL PRIZE: BEST PEN OF SUFFOLK SIRED LAMBS

Competing for the Ian Litchfield Shield

Prize Money: £25

Kindly Sponsored by:




## Farm insurance, the way it should be

We're a family-run business and pride ourselves on forging long term relationships with our farming and agricultural clients. Covering the Midlands, South West and South East, we deliver an extensive range of farm, agri business and equine policies tailored to you.

Farm & Equine **01865 844985**

General **01865 842084**

 Follow us **@County\_Farm**

[www.county-insurance.co.uk/farms](http://www.county-insurance.co.uk/farms)



Independent Insurance Brokers County Insurance Services Limited. Address and Registered Office: County House, Glyme Court, Langford Lane, Kidlington, Oxon OX5 1LQ. Authorised and regulated by the Financial Conduct Authority (FCA) (FRN: 597267). Company registered in England No. 09411634

## **SUPREME CHAMPION PEN OF LAMBS**

Competing for the Rugby Autocar Silver Perpetual Challenge Trophy  
Prize Money: £75  
Kindly Sponsored by:



# **Maximising Returns For Landowners**

**Realising the development potential of land**

Catesby Estates plc

part of Urban<sup>®</sup>Civic

---

T: +44 [0]1788 726810 • E: [info@catesbyestates.co.uk](mailto:info@catesbyestates.co.uk) • W: [www.catesbyestates.co.uk](http://www.catesbyestates.co.uk)



**RESERVE SUPREME CHAMPION PEN OF LAMBS**

Competing for the J W Glover Silver Perpetual Challenge Trophy

Prize Money: £50

Kindly Sponsored by:

NFU MUTUAL COVENTRY  
ARE PROUD TO SPONSOR  
RUGBY PRIMESTOCK  
SOCIETY 49TH  
CHRISTMAS SHOW AND  
SALE

We offer you an attentive, local and personal service  
for your insurance, pensions and investments.

For a real conversation with real people call us or pop in

Meridian House, 6 Eastwood Business Village, Weston Road, Binley Business  
Park, Coventry, CV3 2UB  
02476 444519 | [Wolston\\_agency@nfumutual.co.uk](mailto:Wolston_agency@nfumutual.co.uk)



**NFU Mutual**  
INSURANCE | PENSIONS | INVESTMENTS

M J Chicken, D Macnaughton & H T J Jolly is an appointed representative of The National Farmers Union Mutual Insurance Society Limited (No. 111982).

# PRODUCE CLASSES

**Judge: Mr Mark Ellard**

Judging to commence at 11am

*Produce entries can be made on the day, with a minimum entry fee of £1 per classes to be paid at the time of entry.*

*All produce will be retained by the society and auctioned with the proceeds being donated to the Chairladys Charity 2022.*

*Produce to arrive by 10:30am.*

<u>CLASS</u>	
<b><u>P1:</u></b> <b><u>CORN - BARLEY</u></b>	<u>3kg approx. - Winter or Spring</u> Prize Money: 1st £15 2nd £10 3rd £5
<b><u>P2:</u></b> <b><u>CORN - OATS</u></b>	<u>3kg approx.</u> Prize Money: 1st £15 2nd £10 3rd £5
<b><u>P3:</u></b> <b><u>CORN - WHEAT</u></b>	<u>3kg approx. - Winter or Spring</u> Prize Money: 1st £15 2nd £10 3rd £5
<b><u>P4:</u></b> <b><u>OIL SEED RAPE</u></b>	<u>3kg approx.</u> Prize Money: 1st £15 2nd £10 3rd £5
<b><u>P5:</u></b> <b><u>HAY - SEEDS</u></b>	<u>Two wads or small bale approx.</u> Prize Money: 1st £15 2nd £10 3rd £5
<b><u>P6:</u></b> <b><u>HAY - MEADOW</u></b>	<u>Two wads or small bale approx.</u> Prize Money: 1st £15 2nd £10 3rd £5
<b><u>P7:</u></b> <b><u>POTATOES</u></b>	<u>10kg approx- Red or White</u> Class may be split if sufficient entries Prize Money: 1st £15 2nd £10 3rd £5
<b><u>P8:</u></b> <b><u>SILAGE</u></b> <b><u>MEADOW OR SEEDS</u></b>	<u>Wad or small bale approx.</u> Prize Money: 1st £15 2nd £10 3rd £5
<b><u>P9:</u></b> <b><u>SILAGE</u></b> <b><u>HAYLAGE</u></b>	<u>Wad or small bale approx.</u> Prize Money: 1st £15 2nd £10 3rd £5
<b><u>P10:</u></b> <b><u>FODDER ROOT</u></b> <b><u>VEGETABLES</u></b>	<u>10kg approx.</u> Prize Money: 1st £15 2nd £10 3rd £5
<b><u>P11:</u></b> <b><u>BEANS</u></b>	<u>3kg Approx - Winter or Spring</u> Prize Money: 1st £15 2nd £10 3rd £5

# PRODUCE CLASSES

Kindly Sponsored By

Chartered Surveyors • Land Agents • Estate Agents • Letting Agents



# MARGETTS

ESTABLISHED 1806

**A very Merry Christmas  
and a  
Prosperous New Year  
From all the Team**

T: 01926 496262

W: [www.margetts.co.uk](http://www.margetts.co.uk)

# **BUTCHERS & HOMEBAKING CLASSES**

To be held in the Board Room in the Jersey Building.

*Entries £3 per class. Entries can be made on the day.*

*All entries will be retained by the Society and auctioned with the proceeds being donated to the Chairlady's Charity 2022.*

*Butchers & Home Baking entries to arrive by 10am*

## **HOME BAKING**

### **Class A: The Best Fruit Cake - Open Class**

**Judge: Mrs H Neal**

Competing for a Rugby Primestock Shield

Home baking - cake to be approx 8 inches in diameter.

Prize Money: 1st £15 2nd £10 3rd £5

### **Class B: 6 Mince Pies- Open Class**

**Judge: Mrs H Neal**

Competing for a Rugby Primestock Shield

Home baking - 6 Pastry topped mince pies

Prize Money: 1st £15 2nd £10 3rd £5

## **BUTCHERS CLASSES**

**Judge: Mr T Webster**

### **Class C: The Best Selection of Pork Sausages - Butchers Class**

Competing for the Rugby Master Butchers Trophy

Please provide 6 cooked and 6 uncooked sausages and a description of what your entry contains. Sausages as would be sold in your shops.

Prize Money: 1st £15 2nd £10 3rd £5

### **Class D: The Best Selection of Speciality Sausages - Butchers Class**

Competing for the Rugby Master Butchers Trophy

Please provide 6 cooked and 6 uncooked sausages and a description of what your entry contains. Sausages as would be sold in your shops.

Prize Money: 1st £15 2nd £10 3rd £5

### **CLASS E Best Two Commercial Pork Pies - Butchers Class**

Competing for the Natwest Trophy

**.454kg (1lb) + or - 10% (0.409-0.499kg)**

As would be sold in your shops.

Prize Money: 1st £15 2nd £10 3rd £5

# BUTCHERS & HOMEBAKING CLASSES

Kindly Sponsored by:

## SHARNFORD TRACTORS LTD

"SUPPORTING FARMING & THE COUNTRYSIDE"

Stockists of Le Chameau & Hoggs boots & clothing. Rutland electric fencing, wooden fencing materials. Morris oils and lubricants. IAE gates and livestock handling equipment. Draper hand tools. Vermin traps, paints & preservatives, land drainage & water pipes, Farming toys.

The all-new Pioneer 700-2 and 700-4 utility vehicles are built with a range of features to get those really big jobs done, whilst offering all the comfort, efficiency and build quality you'd expect from a Honda.



**HONDA**  
ALL TERRAIN VEHICLES

**LOGIC**

**HONDA**  
ALL TERRAIN VEHICLES



**MANITOU**  
HANDLING YOUR WORLD

Visit our retail shop at  
Lodge Farm, Broughton Road  
Frolesworth, Lutterworth,  
Leics LE17 5EH.  
[www.sharnfordtractors.co.uk](http://www.sharnfordtractors.co.uk)

Tel: 01455 209300



**CLAAS**

*Complete range of CLAAS Tractor products and Greenline Harvest Machinery now all available from Sharnford Tractors Ltd.*

**SUMO**

**SULKY**

**HARDI**

**LEMKEN**  
The Agrivision Company

**Bunning**

**Kidj**  
FARM MACHINERY

**Shelbourne**  
REYNOLDS

**CHERRY**  
PRODUCTS

**FLEMING**  
MACHINERY FOR AGRICULTURE

**NC**  
ENGINEERING



## POINTS TROPHY

### Most Points gained in the Young Farmers Classes

Competing for the Ian Litchfield Silver Perpetual Challenge Trophy

Prize Money: £25

Kindly Sponsored by:



Our 2022 Chairlady's chosen charities are:



### POINTS TROPHY

#### Most Points gained in all other classes

Competing for the Bert Clarke Silver Perpetual Challenge Trophy

Prize Money: £25

Kindly Sponsored by:

 <p><b>CROSS COUNTIES FARM VETS</b></p> <p>Serving Leicestershire, Northamptonshire and the surrounding counties</p>		<p>Cross Counties Farm Vets has a team of experienced, highly qualified farm vets and support staff. We are dedicated to excellent client care and driving farm efficiency through improving animal health and welfare across Leicestershire, Northamptonshire, Warwickshire and the surrounding areas.</p> <p>Please call 01455 710935 to arrange a visit. New client visits are FREE.</p>

t: 01455 710935   e: [office@ccfarmvets.co.uk](mailto:office@ccfarmvets.co.uk)   w: [ccfarmvets.co.uk](http://ccfarmvets.co.uk)   

### Charity update from 2021

In 2021, Rugby Primestock Society were very pleased to donate £5000 to Blood Cancer UK

Thank you to all those who so generously donated, a fantastic amount raised for such a worthwhile cause.

## Rugby Primestock Society members exhibiting stock in 2022

<u>Exhibitor</u>	<u>Classes</u>	<u>Exhibitor</u>	<u>Classes</u>
Barnwell, A	21	Laban, R	14, 15, 22, 24,
Batchelor, P	14, 15, 17, 18, 23		25
DN Burbidge	1, 9, 10, 12	Leadbeater, DJ & BJ	15, 24
Claridge, AEJ & FJ	14, 15, 23	Leedham, S	25
Claridge, F	21	Morris, G & Z	21, 21
Cockerill, T	14, 15, 21, 22	Page, F	1/2/3, 4/5/6,
Collett, Z	21		9, 11, 13
Evans & Son, CH	12	Page, G	8
Fountaine & Son, GR	1/2/3, 4/5/6, 9,	Pittom Miss A	24, 25
	11, 14, 15, 16, 19,	Plested, D	1/2/3
	23	Poulson & Co	16
Fyfe, A	13	Reeve, T	15
Gear, A	17, 18, 22	Ringer E	21
Gear, J	8,	Richins, R	14, 15, 23
Gear, R	1/2/3	Shepherd, G	21
Gear, J&R	21	Shepherd, S	21
Gibbs, P & LA	20, 25	Stimson, L	12
Gilbert, J	9, 10, 11	Tarry, GB	19, 20
Gray, K	14	Taylor, S	21
Gurney & Son, DW	14, 15, 16, 20,	Taylor, M	21
	23	Trivett, RW & HER	4/5/6, 11, 13
Inkerman Char.	13	Williams & Son, TC	19, 20, 23
Jarrom, C	8	Woodward, MJ	19, 20
Jarrom, P	1/2/3, 4/5/6,	Woodward, R	22
	7, 13		

The Committee wish to thank all the Sponsors, Exhibitors, Judges,  
Purchasers, Stewards, Auctioneers and market staff for their support of  
the show



Supreme Champion Beast 2021 - Vendor: Frank Page  
Judged by Paul Gentry  
Purchased by Leansale, Birmingham



Supreme Champion Pen of Lambs 2021 - Vendor: P Batchelor  
Judged by Philip Parkin  
Purchased by Pak Mecca Meats Ltd

# Rugby Primestock Society & Rugby Farmers Annual Dinner

**Saturday 3<sup>rd</sup> December 2022**

***Kenilworth Golf Club  
Crewe Lane, Kenilworth CV8 2EA***

**7:30pm for 8:00pm**

**3 course meal**

**Guest Speaker - Steve Glanvill of  
Hook Norton Veterinary Group**

**'Jethro' Tribute Act Comedian**

**Raffle**

**£32pp or  
£28pp paid Society members**

***Bookings and enquires to Show Secretary Heather McCurdie***

***[rugbyprimestocksociety@outlook.com](mailto:rugbyprimestocksociety@outlook.com) or 07899 916332***





**THE MIDLANDS MART**

[RUGBYFARMERSMART.COM](http://RUGBYFARMERSMART.COM)

## **FORTHCOMING SALES**

**SATURDAY 3RD DECEMBER  
SMALLHOLDER SALE**

**MONDAY 19TH DECEMBER  
SALE OF STORE CATTLE & STORE SHEEP**

**THURSDAY 19TH JANUARY  
SALE OF STORE CATTLE**

**Vendors who are wishing to sell stock  
please feel free to contact:**

Tom Wrench - 07774 723758  
Emma Coupland- 07808 271218  
Tim Webster- 07437 101163

who will gladly make

**A FREE ON FARM VISIT & VALUATION**



**Follow us on social media:**

Facebook & Twitter - @RFMMidlandsMart

Instagram - rugbyfarmersmartltd

